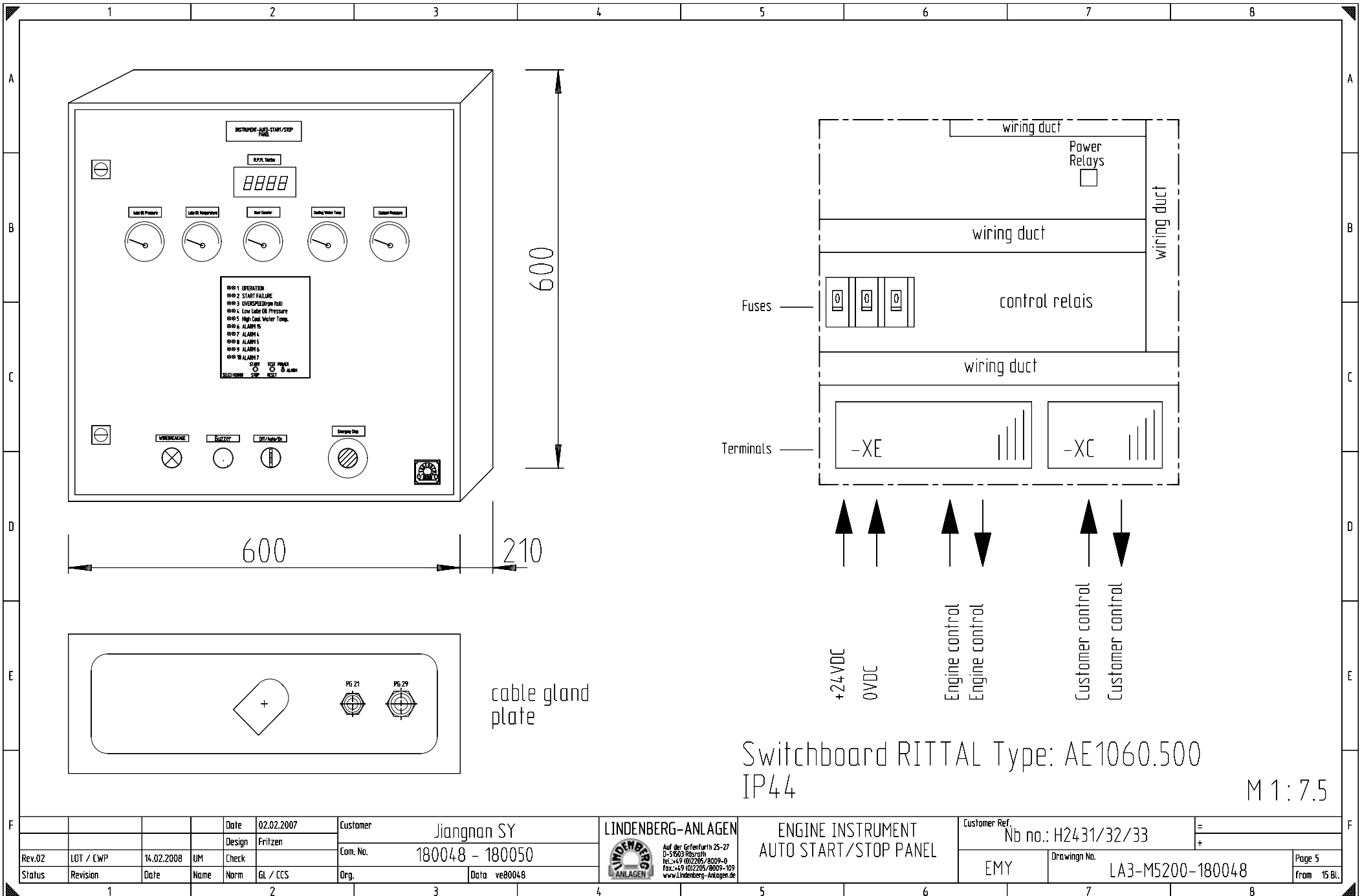


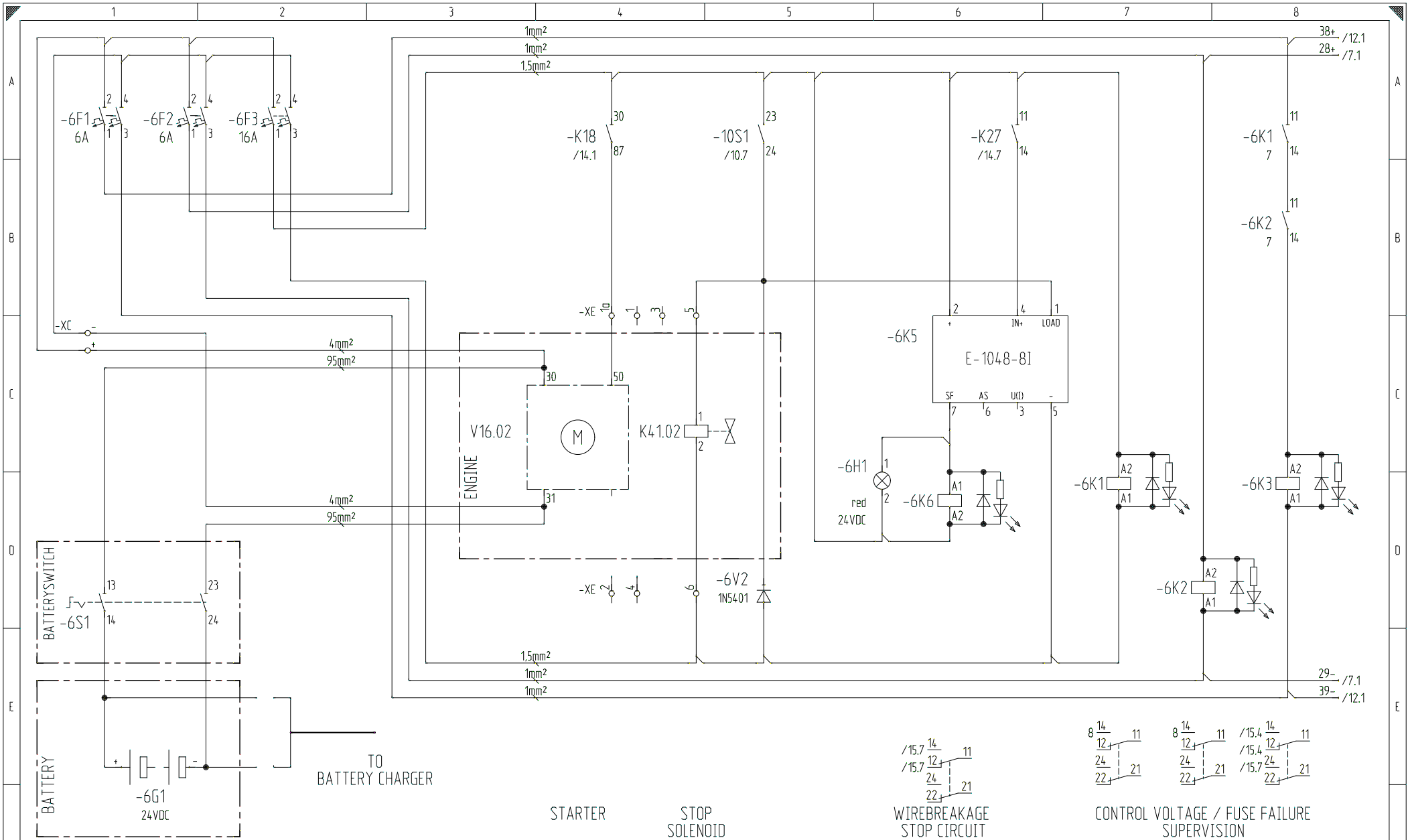
Date	02.02.2007	Customer	Jiangnan SY	 <p>Auf der Gröfenfurth 25-27 D-53603 Rosdorf Tel.: +49 (0)2205/8009-0 Fax: +49 (0)2205/8009-109 www.Lindenberg-Anlagen.de</p>	ENGINE INSTRUMENT AUTO START/STOP PANEL	Customer Ref.	Nb no.: H24-31/32/33	=
Design	Fritzen	Com. No.	180048 - 180050		EMY	Drawing No.	LA3-M5200-180048	+
Rev.02	LOT / CWP	14.02.2008	UM	Check	Org.	ve80048		Page 3
Status	Revision	Date	Name	Norm	GL / CCS	Org.		from 15 Bl.



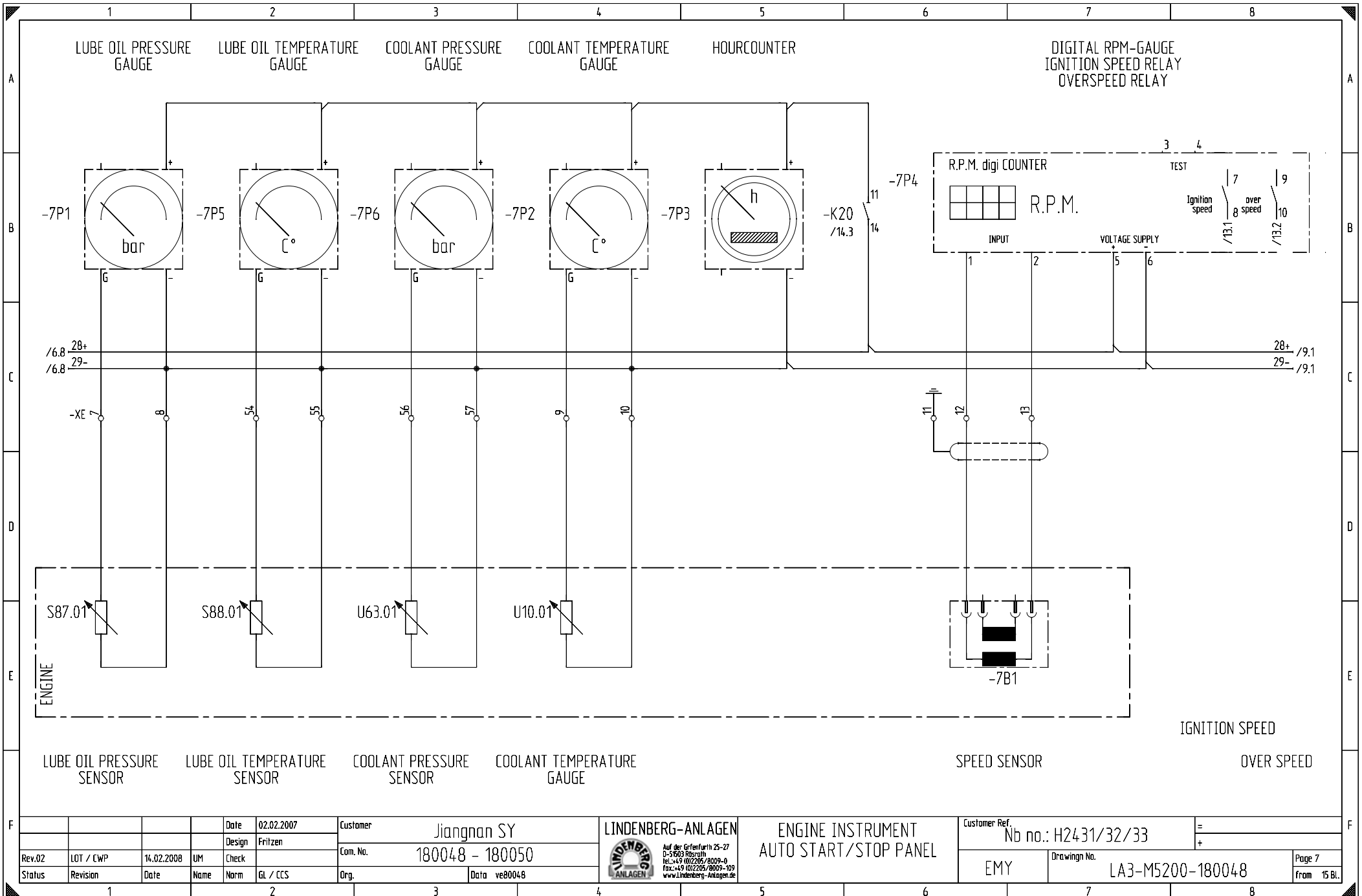
Switchboard RITTAL Type: AE1060.500
IP44

M 1 : 7.5

Date: 02.02.2007		Customer: Jiangnan SY		LINDENBERG-ANLAGEN		ENGINE INSTRUMENT AUTO START/STOP PANEL		Customer Ref. Nb no.: H24-31/32/33	
Design: Fritzen		Com. No.: 180048 - 180050		Auf der Erlenerhth 25-27 D-51603 Rosdorf Tel.: +49 (0)2205/8009-0 Fax: +49 (0)2205/8009-109 www.Lindenberg-ANLAGEN.de		EMY		Drawing No. LA3-M5200-180048	
Rev.02	LOT / CWP	14.02.2008	UM	Check	Data: ve80048			Page 5	
Status	Revision	Date	Name	Norm	GL / CCS	Org.			from 15 BL.



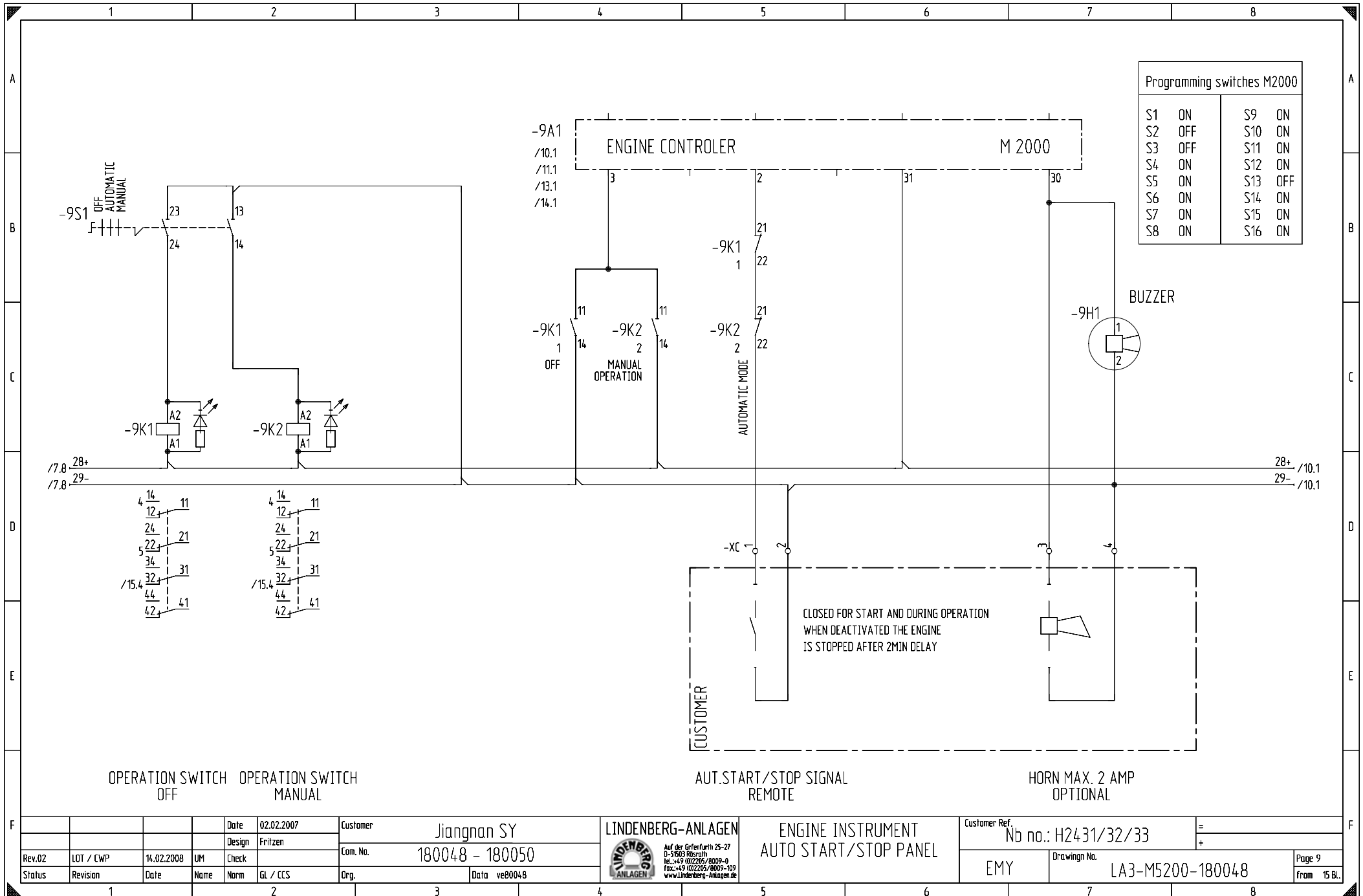
Date: 02.02.2007		Customer: Jiangnan SY		LINDENBERG-ANLAGEN		ENGINE INSTRUMENT AUTO START/STOP PANEL		Customer Ref. Nb no.: H2431/32/33	
Design: Fritzen		Com. No.: 180048 - 180050		Auf der Gröfenfurth 25-27 D-51503 Rosrath Tel.: +49 (0)2205/8009-0 Fax: +49 (0)2205/8009-109 www.lindenberg-anlagen.de		EMY		Drawing No. LA3-M5200-180048	
Rev.02	LOT / CWP	14.02.2008	UM	Check	GL / CCS	Org.	Data: ve80048	Page 6 from 15 Bl.	
Status	Revision	Date	Name	Norm	GL / CCS	Org.	Data: ve80048	from 15 Bl.	



RESERVE / SPARE

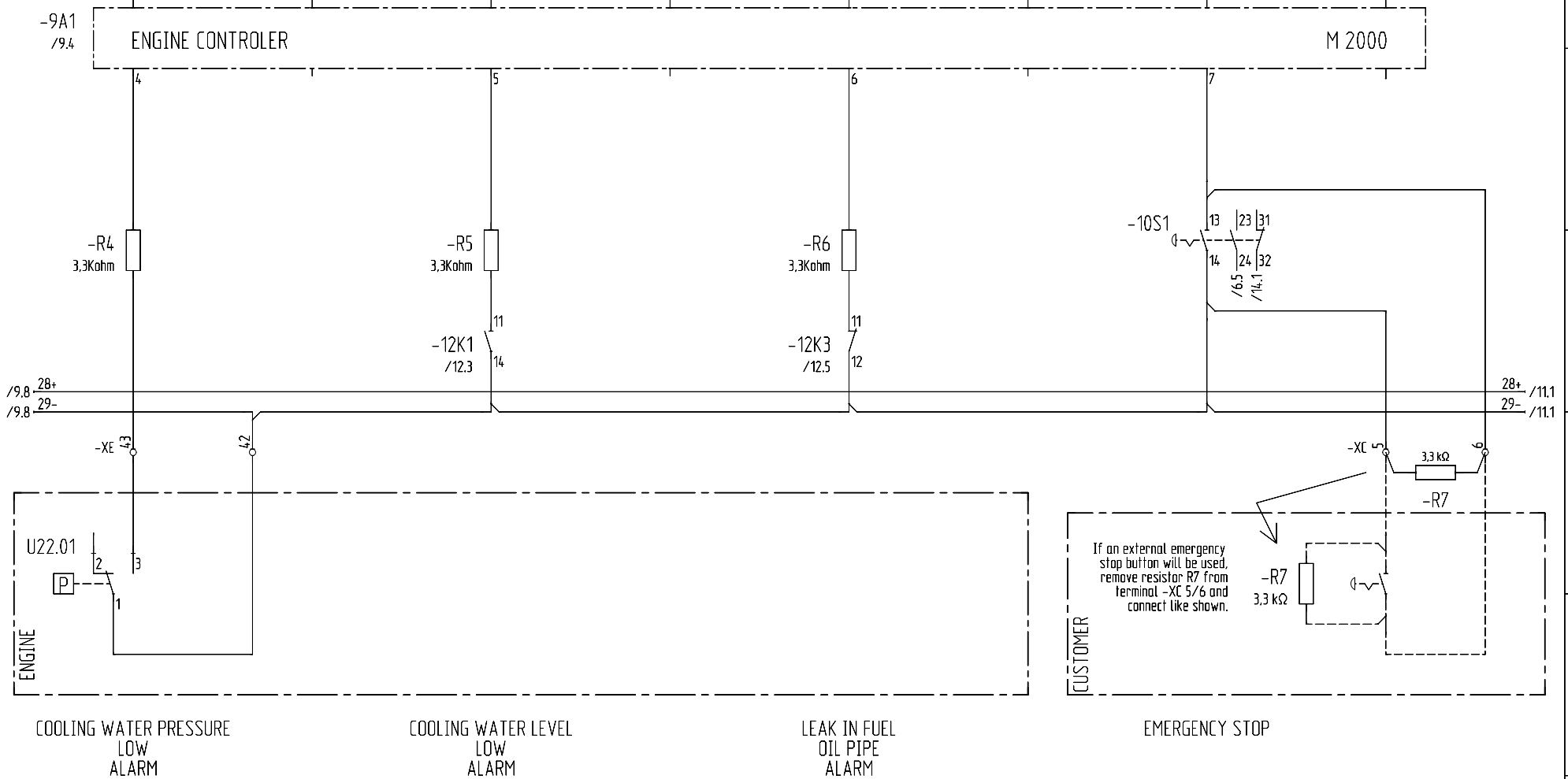
BLATT / PAGE 8

Rev.02	LOT / CWP	14.02.2008	UM	Check	Date	02.02.2007	Customer	Jiangnan SY	 Auf der Gröfenfurth 25-27 D-51603 Röschen Tel.: +49 (0)2205/8009-0 Fax: +49 (0)2205/8009-109 www.Lindenberg-Anlagen.de	ENGINE INSTRUMENT AUTO START/STOP PANEL	Customer Ref.	Nb no.: H24-31/32/33	=
Status	Revision	Date	Name	Norm	GL / CCS	Org.	Data	ve80048		EMY	Drawing No.	LA3-M5200-180048	+
1	2	3	4	5	6	7	8	Page 8	from 15 Bl.				

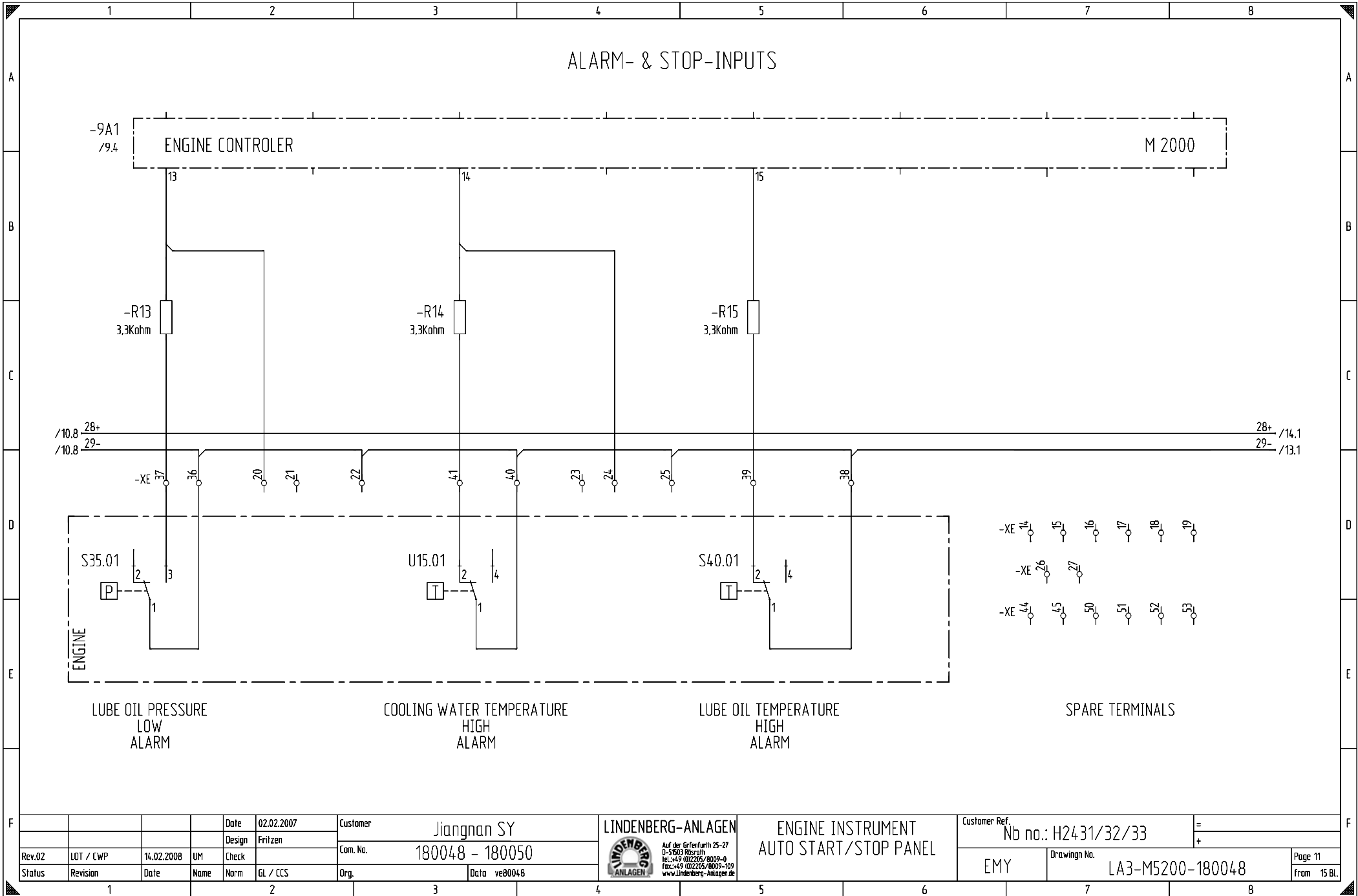


Rev.02	LOT / CWP	14.02.2008	UM	Check	Date	02.02.2007	Customer	Jiangnan SY	<p>Auf der Gröfenfurth 25-27 D-51603 Rosdorf Tel.: +49 (0)2205/8009-0 Fax: +49 (0)2205/8009-109 www.Lindenberg-Anlagen.de</p>	ENGINE INSTRUMENT AUTO START/STOP PANEL	Customer Ref.	Nb no.: H24-31/32/33	=	
Status	Revision	Date	Name	Norm	GL / CCS	Org.	Data	ve80048		Com. No.	180048 - 180050	EMY	Drawing No.	LA3-M5200-180048
1	2	3	4	5	6	7	8						Page 9 from 15 Bl.	

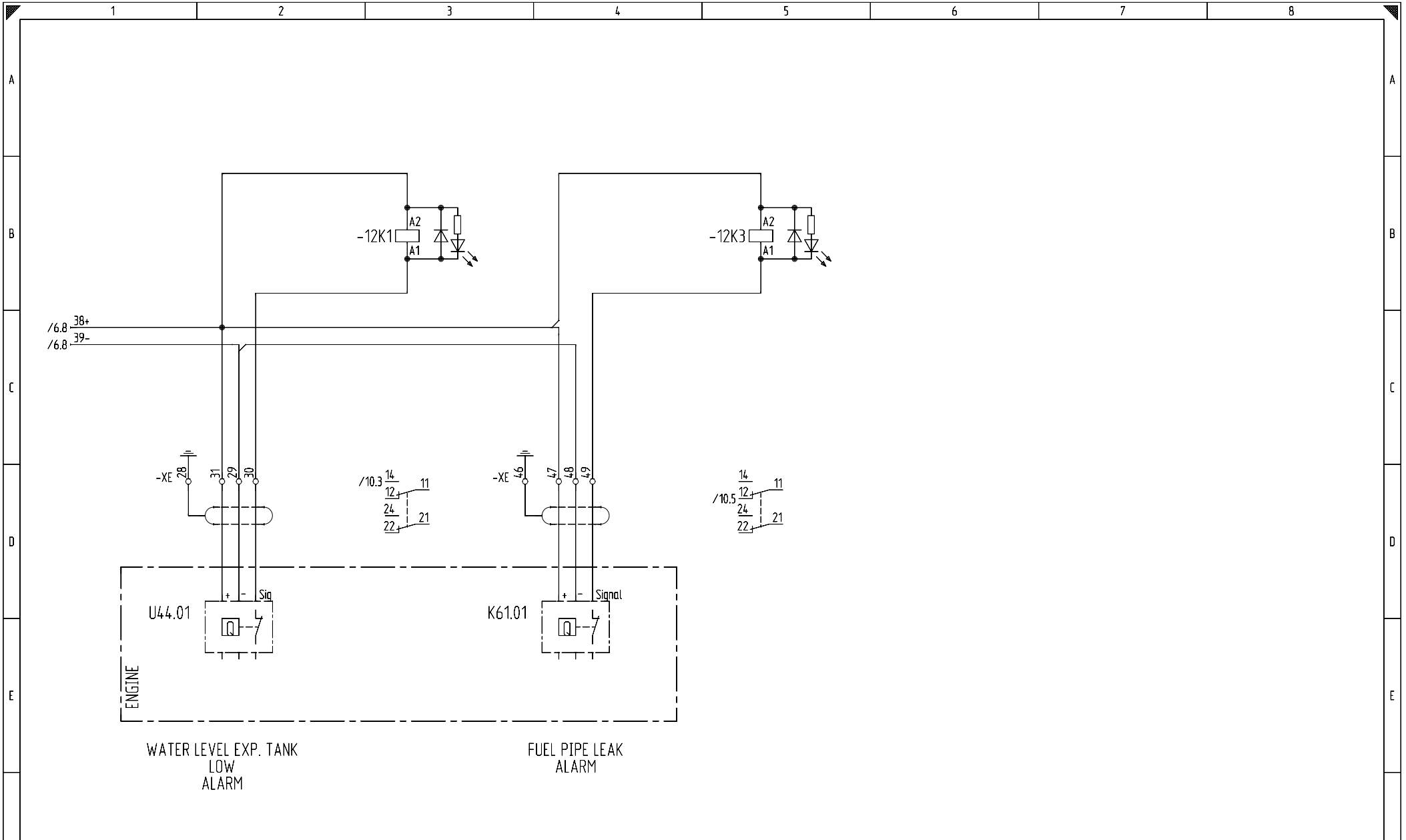
ALARM- & STOP-INPUTS



Rev.02	LOT / CWP	14.02.2008	UM	Check	Date	02.02.2007	Customer	Jiangnan SY	 <p>Auf der Gröfenfurth 25-27 D-51603 Rosdorf Tel.: +49 (0)2205/8009-0 Fax: +49 (0)2205/8009-109 www.Lindenberg-Anlagen.de</p>	ENGINE INSTRUMENT AUTO START/STOP PANEL	Customer Ref.	Nb no.: H24-31/32/33	=
Status	Revision	Date	Name	Norm	GL / CCS	Org.	Data	ve80048		EMY	Drawing No.	LA3-M5200-180048	+
1	2	3	4	5	6	7	8					Page 10 from 15 Bl.	



Date: 02.02.2007		Customer: Jiangnan SY		 <small>Auf der Gröfenfurth 25-27 D-51603 Rössteln Tel.: +49 (0)2205/8009-0 Fax: +49 (0)2205/8009-109 www.lindenberg-anlagen.de</small>		ENGINE INSTRUMENT AUTO START/STOP PANEL		Customer Ref. Nb no.: H24-31/32/33			
Design: Fritzen		Com. No.: 180048 - 180050						Drawing No. LA3-M5200-180048		Page 11	
Rev.02	LOT / CWP	14.02.2008	UM	Check	Org.	Data: ve80048	EMY		from 15 Bl.		
Status	Revision	Date	Name	Norm	GL / CCS	Org.					



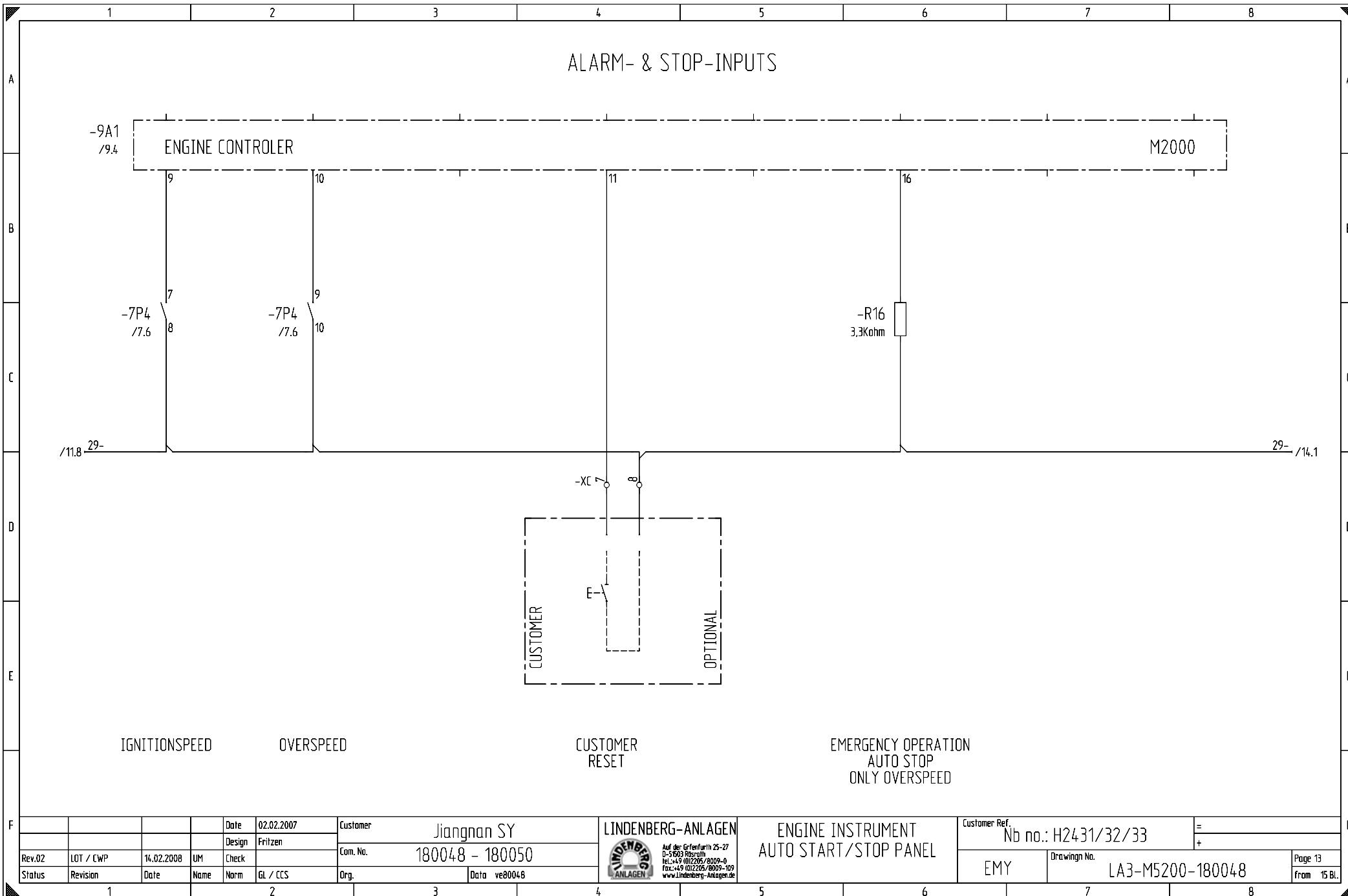
WATER LEVEL EXP. TANK
LOW
ALARM

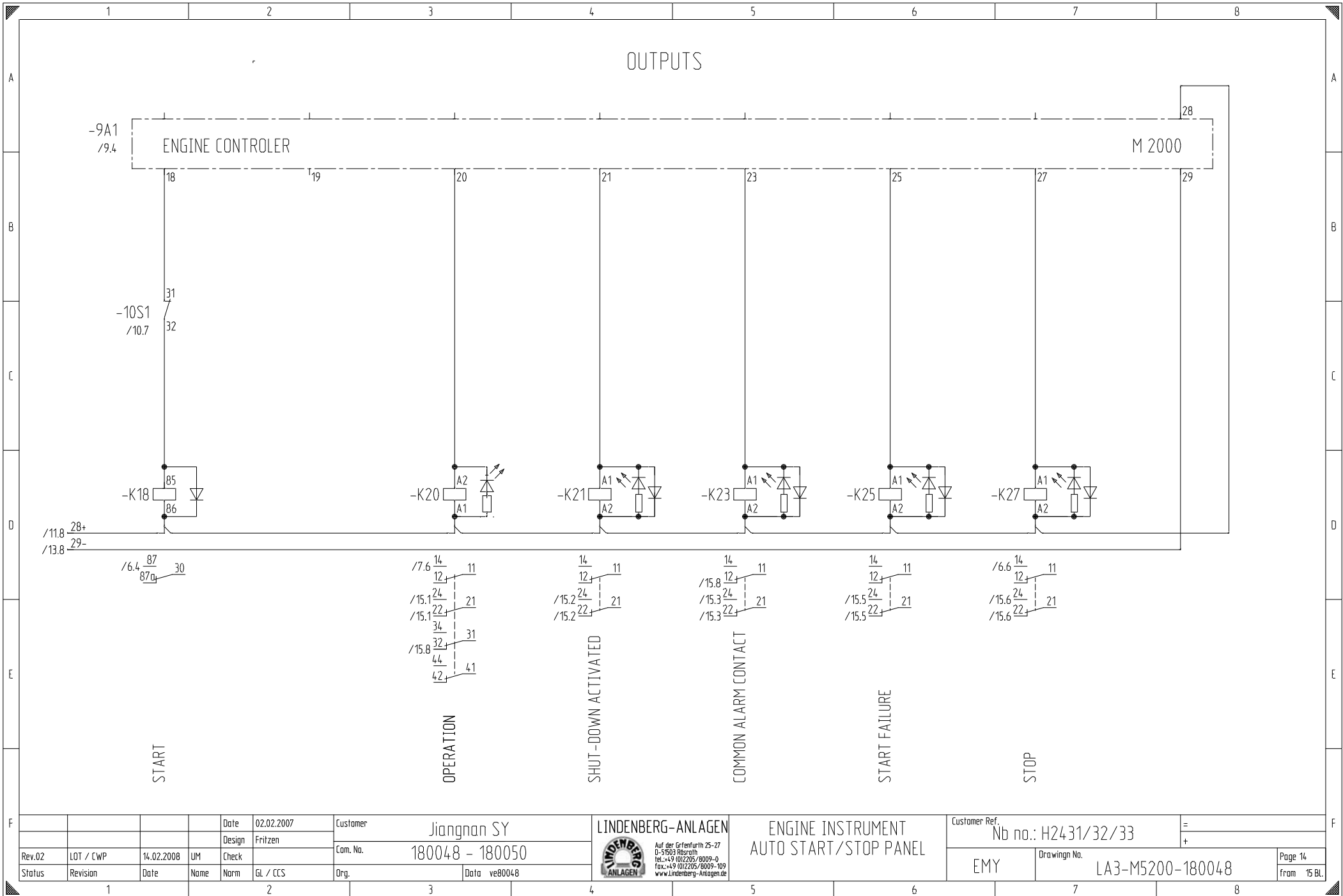
FUEL PIPE LEAK
ALARM

Date		02.02.2007		Customer		Jiangnan SY		Customer Ref.		Nb no.: H24-31/32/33	
Design		Fritzen		Com. No.		180048 - 180050		EMY		Drawing No.	
Rev.02		LOT / CWP		14.02.2008		UM		Check		LA3-M5200-180048	
Status		Revision		Date		Name		Norm		Page 12	
1		2		3		4		5		8	
GL / CCS		Org.		Data		ve80048		ANLAGEN		from 15 Bl.	



ENGINE INSTRUMENT
AUTO START/STOP PANEL





Date	02.02.2007	Customer	Jiangnan SY		Customer Ref.	Nb no.: H2431/32/33	
Design	Fritzen	Com. No.	180048 - 180050		EMY	Drawing No. LA3-M5200-180048	
Rev.02	LOT / CWP	14.02.2008	UM	Check			Page 14
Status	Revision	Date	Name	Norm	GL / CCS	Org.	from 15 BL
						Data ve80048	



ENGINE INSTRUMENT
 AUTO START/STOP PANEL

1	2		3		4		5		6		7		8	
Cable-No.	Cable-Type	Cable-mm ²	Destination External		Bridge	Terminal No.:	Destination Internal		Sheet	Path	Cable-No.	Cable-Type	Cable-mm ²	
Object	Connection	Object	Connection	Object			Connection							
			-6S1	23	o	-	-6F1	4	6.1					
			-6S1	13	o	+	-6F1	2	6.1					
					o	1	-9K2	22	9.5					
					o	2	-9K1	14	9.5					
					o		-XE	42	9.5					
					o	3	-9A1	30	9.7					
					o	4	-9H1	2	9.7					
			-R7		o	5	-10S1	14	10.8					
			-R7		o	6	-10S1	13	10.8					
					o	7	-9A1	11	13.4					
					o	8	-7P4	10	13.4					
					o		-R16		13.4					
			NC		o	9	-K20	22	15.1					
			NO		o	10	-K20	24	15.1					
			COM		o	11	-K20	21	15.2					
			NC		o	12	-K21	22	15.2					
			NO		o	13	-K21	24	15.2					
			COM		o	14	-K21	21	15.2					
			NC		o	15	-K23	22	15.3					
			NO		o	16	-K23	24	15.3					
			COM		o	17	-K23	21	15.3					
			NC		o	18	-6K3	12	15.4					
			NO		o	19	-6K3	14	15.4					
			COM		o	20	-6K3	11	15.4					
			COM		o	21	-9K2	32	15.4					
			NC		o	22	-9K1	31	15.5					
			NC		o	23	-K25	22	15.5					
			NO		o	24	-K25	24	15.5					
			COM		o	25	-K25	21	15.5					
			NC		o	26	-K27	22	15.6					

Rev.02	LOT / CWP	14.02.2008	UM	Check	Date	02.02.2007	Customer	Jiangnan SY	LINDENBERG-ANLAGEN	-XC	Customer Ref.	Nb no.: H24-31/32/33	=	
Status	Revision	Date	Name	Norm	GL / CCS	Org.	Data	tera0001		Terminal List	EMY	Drawing No.	LA3-M5200-180048	+
										Page 1		from 4 Bl.		

1		2		3		4		5		6		7		8	
A	Terminal destination											A			
	-XC														
	Destination External					Bridge	Terminal No.:	Destination Internal							
Object		Connection			Object			Connection							
B	Cable-No.	Cable-Type	Cable-mm ²									Cable-No.	Cable-Type	Cable-mm ²	
												Sheet	Path		
C															
D															
E															
F															


Rev.02	LOT / CWP	14.02.2008	UM	Check	Date	02.02.2007	Customer	Jiangnan SY	LINDENBERG-ANLAGEN	-XC	Customer Ref.	Nb no.: H24-31/32/33	=		
Status	Revision	Date	Name	Norm	GL / CCS	Org.	Data	tera0001		Terminal List	EMY	Drawing No.	LA3-M5200-180048	Page 2	
														from	4 Bl.

1	2		3		4		5		6		7		8	
A	Terminal destination											A		
	-XE												A	
	Cable-No.	Cable-Type	Cable-mm ²	Destination External		Bridge	Terminal No.:	Destination Internal		Sheet	Path			Cable-No.
Object	Connection	Object	Connection	Object	Connection			Object	Connection			Object		Connection
				V16.02	50	o	1a	-K18		87		6.4		
						o	1					6.4		
						o	2					6.4		
						o	3					6.4		
						o	4					6.4		
				-6K5	LOAD	o	5	K41.02		1		6.4		
				K41.02	2	o	6	-6F3		3		6.4		
						o		-6V2				6.4		
				S87.01		o	7	-7P1		G		7.1		
				S87.01		o	8	-6K2		A1		7.1		
				U10.01		o	9	-7P2		G		7.4		
				U10.01		o	10	-6K2		A1		7.4		
						o	11					7.6		
				-7B1		o	12	-7P4		1		7.6		
				-7B1		o	13	-7P4		2		7.7		
						o	14					11.7		
						o	15					11.7		
						o	16					11.7		
						o	17					11.7		
						o	18					11.7		
						o	19					11.8		
						o	20	-9A1		13		11.2		
						o	21					11.2		
						o	22					11.3		
						o	23					11.4		
						o	24	-9A1		14		11.4		
						o	25					11.4		
						o	26					11.7		
						o	27					11.7		
						o	28					12.1		

F	Date	02.02.2007	Customer	Jiangnan SY	LINDENBERG-ANLAGEN	-XE	Customer Ref.	Nb no.: H24-31/32/33	=		F
Rev.02	LOT / CWP	14.02.2008	UM	Check	Com. No.	180048 - 180050	EMY	Drawing No.	LA3-M5200-180048	Page 3	
Status	Revision	Date	Name	Norm	GL / CCS	Org.	Data	tera0001	LINDENBERG ANLAGEN	Terminal List	4 Bl.

1		2		3		4		5		6		7		8	
Pos.	ITEM.	DESCRIPTION				TYPE		MANUFACTURER				PAGE			
1	-6F1	automatic cut-outs				2C6		Merlin Gerin GmbH				6.1			
2	-6F2	automatic cut-outs				2C6		Merlin Gerin GmbH				6.1			
3	-6F3	automatic cut-outs				2B16		Merlin Gerin GmbH				6.2			
4	-6G1	batterybattery				s.MAP		miscellaneous				6.1			
5	-6H1	indicator lamp red				red24VDC		Klöckner Moeller				6.6			
6	-6K1	relay DC24				RJ2S-CL		IDEC Elektrotechnik GmbH				6.7			
7	-6K2	relay DC24				RJ2S-CL		IDEC Elektrotechnik GmbH				6.7			
8	-6K3	relay DC24				RJ2S-CL		IDEC Elektrotechnik GmbH				6.8			
9	-6K5	Smart Power Relay E-1048-8I				E-1048-8I		E-T-A Elektrotechnische A				6.6			
10	-6K6	relay DC24				RJ2S-CL		IDEC Elektrotechnik GmbH				6.6			
11	-6S1	batteryswitch				siehemech.liste/seemach.list		miscellaneous				6.1			
12	-6V2	Diode terminal				870-540/281-411		Wago Kontakttechnik GmbH				6.5			
13	-7B1	Double-Pickup				s. MAP		GAC				7.6			
14	-7P1	lube oil pressure gauge				N02124001024		VDO KIENZLE Vertretung Ki				7.1			
15	-7P2	temperature gauge				N02321712024		VDO KIENZLE Vertretung Ki				7.4			
16	-7P3	hour counter				N03110502		VDO KIENZLE Vertretung Ki				7.5			
17	-7P4	RPM counter				AK127/24-i-2		Bause Messtechnik GmbH				7.6			
18	-7P5	temperature gauge				N02321712024		VDO KIENZLE Vertretung Ki				7.2			
19	-7P6	lube oil pressure gauge				N02124001024		VDO KIENZLE Vertretung Ki				7.3			
20	-9A1	control unit				M2000		SELCO A/S				9.4			
21	-9H1	buzzer				SC235BF		Sonitron				9.7			
22	-9K1	relay 55.34 4W				55.34.9.0240090		Finder relay GmbH				9.1			
F		Date		02.02.2007		Customer		Jiangnan SY		LINDENBERG-ANLAGEN		Customer Ref.		Nb no.: H24-31/32/33	
		Design		Fritzen		Com. No.		180048 - 180050		part list		EMY		Drawing No. LA3-M5200-180048	
Rev.02		LOT / CWP		14.02.2008		UM		Check		Com. No.		EMY		Page 1	
Status		Revision		Date		Name		Norm		Org.		EMY		Page 1	
						GL / CCS		Data		tera0001				3 Bl.	



1		2		3		4		5		6		7		8		
Pos.	ITEM.	DESCRIPTION				TYPE		MANUFACTURER				PAGE				
A	23	-9K2	relay 55.34 4W				55.34.9.0240090		Finder relay GmbH				9.2			
	24	-9S1	selector control switch 1-0-2				ZBxBJ5		Telemecanique				9.1			
	25	-10S1	emergency stop switch				ZBxBS844/ZB2BE102		Telemecanique				10.7			
B	26	-12K1	relay DC24				RJ2S-CL		IDEC Elektrotechnik GmbH				12.3			
	27	-12K3	relay DC24				RJ2S-CL		IDEC Elektrotechnik GmbH				12.5			
	28	-K18	relay				0332209204		Bosch GmbH				14.1			
	29	-K20	relay DC24				RJ2S-CL		IDEC Elektrotechnik GmbH				14.3			
	30	-K21	relay DC24				RJ2S-CL		IDEC Elektrotechnik GmbH				14.4			
C	31	-K23	relay DC24				RJ2S-CL		IDEC Elektrotechnik GmbH				14.5			
	32	-K25	relay DC24				RJ2S-CL		IDEC Elektrotechnik GmbH				14.6			
	33	-K27	relay DC24				RJ2S-CL		IDEC Elektrotechnik GmbH				14.7			
D	34	-R4	resistor				3,3 kOhm		D. Schuricht GmbH				10.1			
	35	-R5	resistor				3,3 kOhm		D. Schuricht GmbH				10.3			
	36	-R6	resistor				3,3 kOhm		D. Schuricht GmbH				10.5			
	37	-R7	resistor				Schuricht		D. Schuricht GmbH				10.8			
	38	-R13	resistor				3,3 kOhm		D. Schuricht GmbH				11.1			
	39	-R14	resistor				3,3 kOhm		D. Schuricht GmbH				11.3			
E	40	-R15	resistor				3,3 kOhm		D. Schuricht GmbH				11.5			
	41	-R16	resistor				3,3 kOhm		D. Schuricht GmbH				13.6			
	42	K41.02	stop solenoid				siehe mech. Liste / see mech. list		miscellaneous				6.4			
	43	K61.01	level sensor				420404		Bedia Maschinenfabrik				12.4			
	44	S35.01	lube oil pressure switch				siehe mech. Liste / see mech. list		Danfoss Antriebs- und Reg				11.1			
F	Date		02.02.2007		Customer		Jiangnan SY		LINDENBERG-ANLAGEN		Customer Ref.		Nb no.: H24-31/32/33		=	
	Design		Fritzen		Com. No.		180048 - 180050		 Auf der Gröfenfurth 25-27 D-51603 Röschen Tel.: +49 (0)2205/8009-0 Fax: +49 (0)2205/8009-109 www.lindenberg-anlagen.de		Drawing No.		LA3-M5200-180048		Page 2	
	Rev.02	LOT / CWP	14.02.2008	UM	Check			part list		EMY				from 3 Bl.		
	Status	Revision	Date	Name	Norm	GL / CCS	Org.	Data	tera0001							

