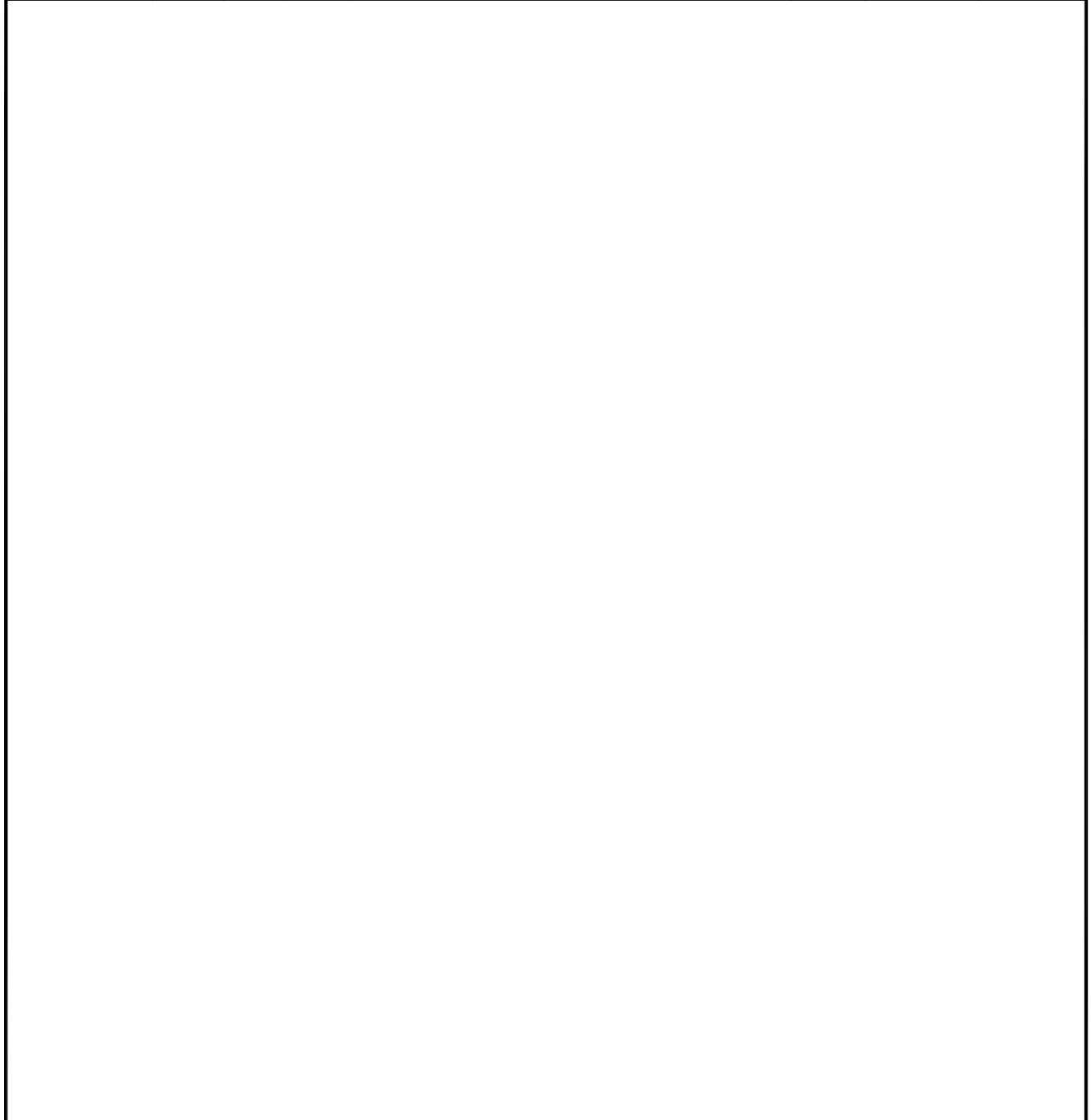


图纸履历 PLAN HISTORY

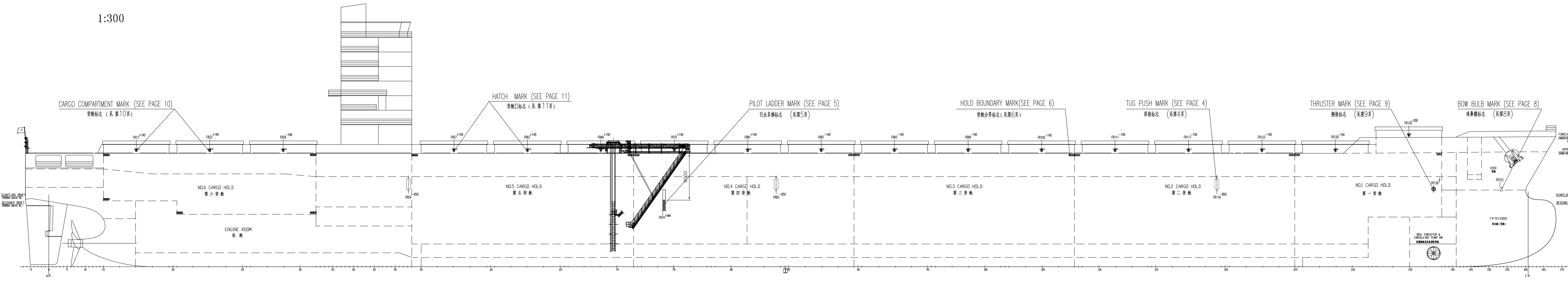
日期 DATE	标记 MARKER	数量 NUMBER	版本 REV.	修改单号/说明 MODIFICATION NO./DESCRIPTION	页码 PAGE	设绘 DESIGNED	审核 EXAMINE



<b>JNSD</b> Shanghai China Tel: +86-021-53025656 Fax: +86-021-63012364 E-mail: jnsd@jnshipyard.com.cn			5,100 箱集装箱船 5,100TEU CONTAINER VESSEL			设计阶段 DES.STA.	完工设计 FINISH DESIGN		
						船舶标志布置图 SHIP'S MARK ARRANGEMENT			工程号 HULL NO.
文件号 FILE		版本 REV.		图号 DRAWING NO.	FO-24 72002400D				
设绘 DESIGNED		审核 EXAMINE		重量 (kg) WEIGHT	比例 SCALE	1:200	面积 m <sup>2</sup> AREA		
校对 CHECKED		复审 REVIEWED		共 15 页 TOTAL SHEETS			第 1 页 SHEET		
会签 COUNTERSIGN		审定 APPROVED		上海江南长兴重工有限责任公司 SHANGHAI JIANGNAN CHANGXING HEAVY INDUSTRY CO.,LTD.					
标检 STANDARDIZED		批准 AGREED		总面积: 1.973m <sup>2</sup> 4号 297x210=0.06m <sup>2</sup>					

SHIP'S MARK ARRANGEMENT 船舶标志布置图			工程号	H2431	PAGE			
			图号	FO-24/72002400D	2/15			
9		HATCH MARK	102	(珠焊)				
	第11页	货舱口标志						
8		CONTAINER SPOT MARK	左右 各一套	(珠焊)				
	第13,14,15页	集装箱箱位标志						
7		CARGO COMPARTMENT MARK	34	(珠焊)				
	第10页	货舱标志						
6		THRUSTER MARK	2	Q235-A				
	第9页	侧推标志 T=6						
5		BOW BULB MARK	2	Q235-A				
	第8页	球鼻艏标志 T=6						
4		FRAME MARK	左右 各一套	(珠焊)				
	第7页	肋位标志						
3		HOLD BOUNDARY MARK	左右 各一套	Q235-A				
	第6页	货舱分界标志 T=6						
2		PILOT LADDER MARK	2	(珠焊)				
	第5页	引水员梯标志						
1		TUG PUSH MARK	6	(珠焊)				
	第4页	顶推标志						
ITEM NO. 序号	MARK 代号	NAME & SPEC 名称及规格	QTY 数量	NAME 名称	TYPE 牌号	SET 每件	TOTAL 共件	REMARK 附注
				MATERIAL 材料		WEIGHT 重量(kg)		

1:300



CARGO COMPARTMENT MARK (SEE PAGE 10)  
货舱标志 (见第10页)

HATCH MARK (SEE PAGE 11)  
货舱口标志 (见第11页)

PILOT LADDER MARK (SEE PAGE 5)  
引水员梯标志 (见第5页)

HOLD BOUNDARY MARK (SEE PAGE 6)  
货舱分界标志 (见第6页)

TUG PUSH MARK (SEE PAGE 4)  
顶推标志 (见第4页)

THRUSTER MARK (SEE PAGE 9)  
侧推标志 (见第9页)

BOW BULB MARK (SEE PAGE 8)  
球鼻艏标志 (见第8页)

SCANTLING DRAFT  
1500mm above B.L.

NO.6 CARGO HOLD  
第六货舱

ENGINE ROOM  
机舱

NO.5 CARGO HOLD  
第五货舱

NO.4 CARGO HOLD  
第四货舱

NO.3 CARGO HOLD  
第三货舱

NO.2 CARGO HOLD  
第二货舱

NO.1 CARGO HOLD  
第一货舱

VOID  
空舱

F.P.T.K.VOID  
球鼻艏空舱

BOW THRUSTER &  
EMERGENCY FIRE PUMP RM  
首侧推器及应急消防泵舱

FORECASTLE DECK  
FR55+150mm above B.L.  
上甲板

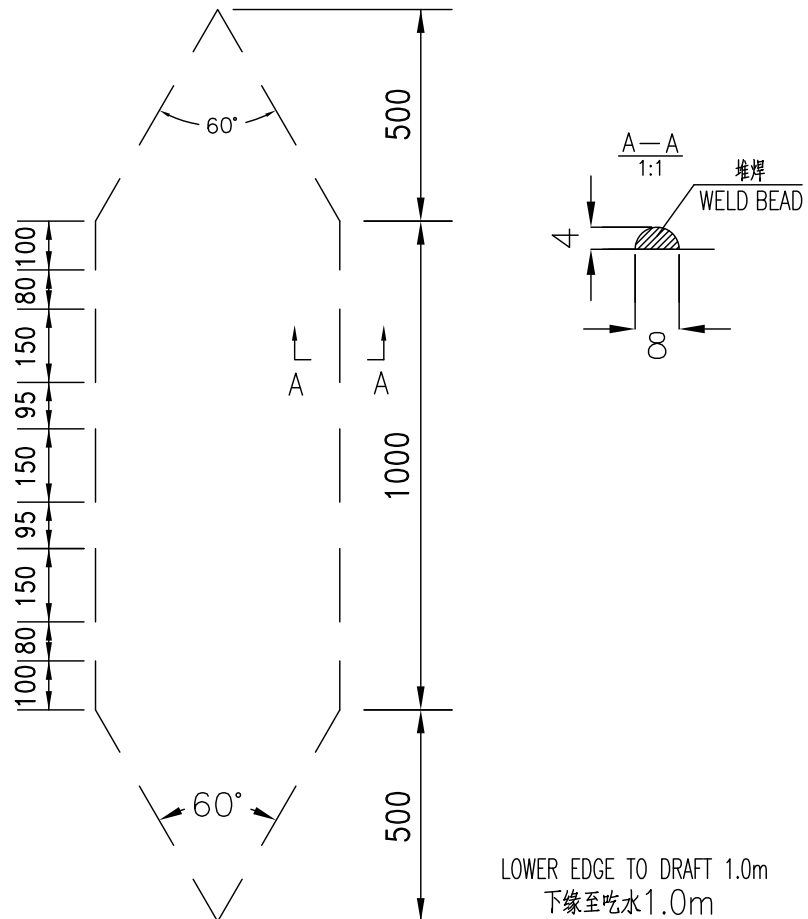
UPPER DECK  
FR50+50mm above B.L.  
上甲板

SCANTLING DRAFT  
DESIGNED DRAFT

F.P.

TUG PUSH MARK  
顶推标志

FR54<sup>-650</sup>; FR83<sup>-850</sup>; FR119<sup>-850</sup>



NOTES:

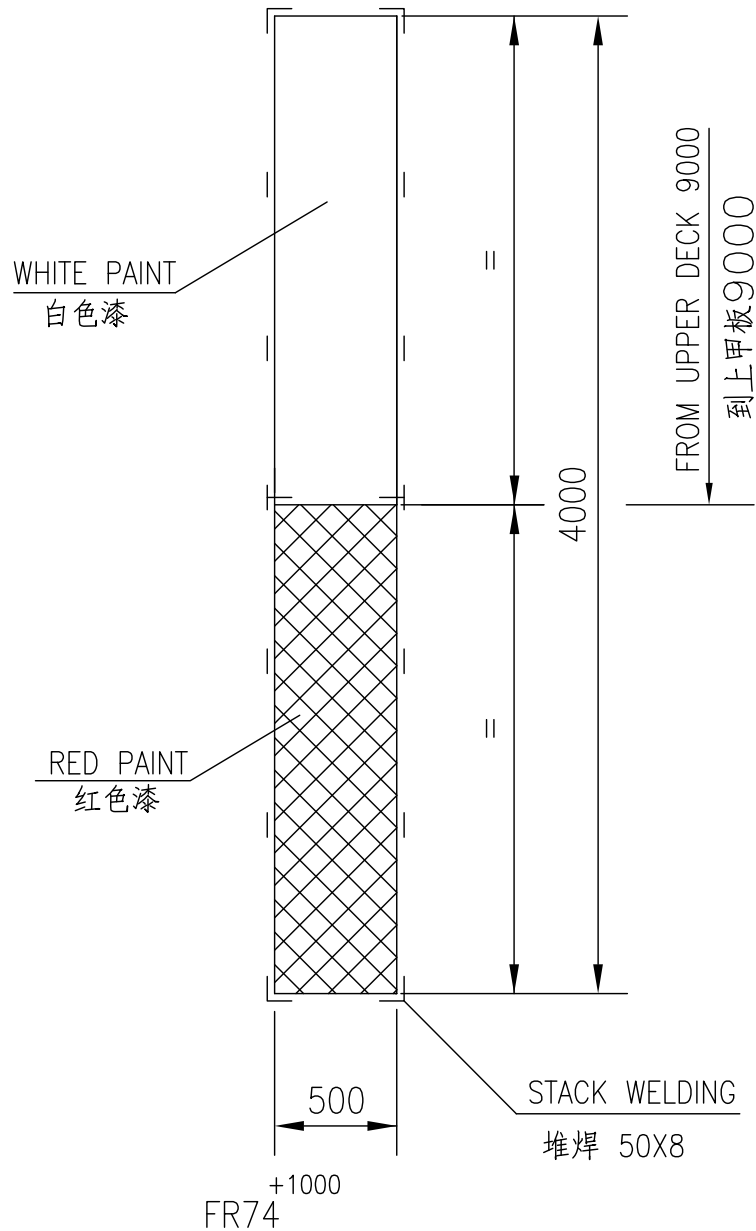
1. THE MARK SHOULD BE FIXED ON THE HULL'S BOTH SIDE AND SYMMETRICALLY ARRANGE. THE POSITION OF THIS MARK SEE PAGE 3 IN THE DRAWING.
2. THE NUMBER OF TUG PUSH MARK IS 6.
3. THE MARK IS MADE OF WELD BEADS ON SHELL.
4. THE MARK IS PAINTED BLACK.

说明:

1. 标志需左右舷对称布置。布置位置见本册第3页。
2. 顶推标志为6个。
3. 此标志采用电焊堆焊形式。
4. 标志漆为黑色。

PILOT LADDER MARK  
引水员梯标志

1:30



NOTES:

1. PILOT LADDER MARK SHOULD BE FIXED ON THE HULL'S BOTH SIDE AND SYMMETRICALLY ARRANGED,
2. THE POSITION OF THIS MARK SEE PAGE 3 IN THE DRAWING.

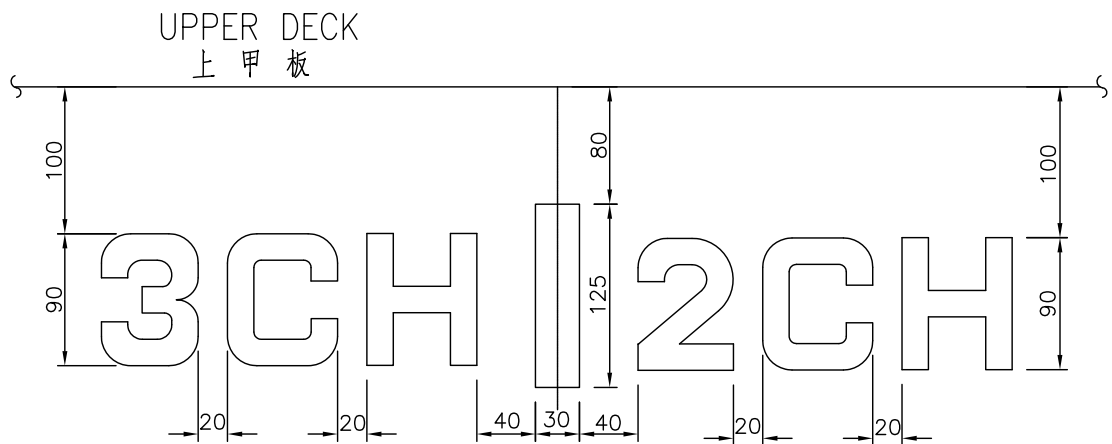
说明:

1. 引水员标志左右舷对称布置。
2. 引水标志布置位置见本册第3页。

HOLD BOUNDARY MARK

货舱分界标志

1:5



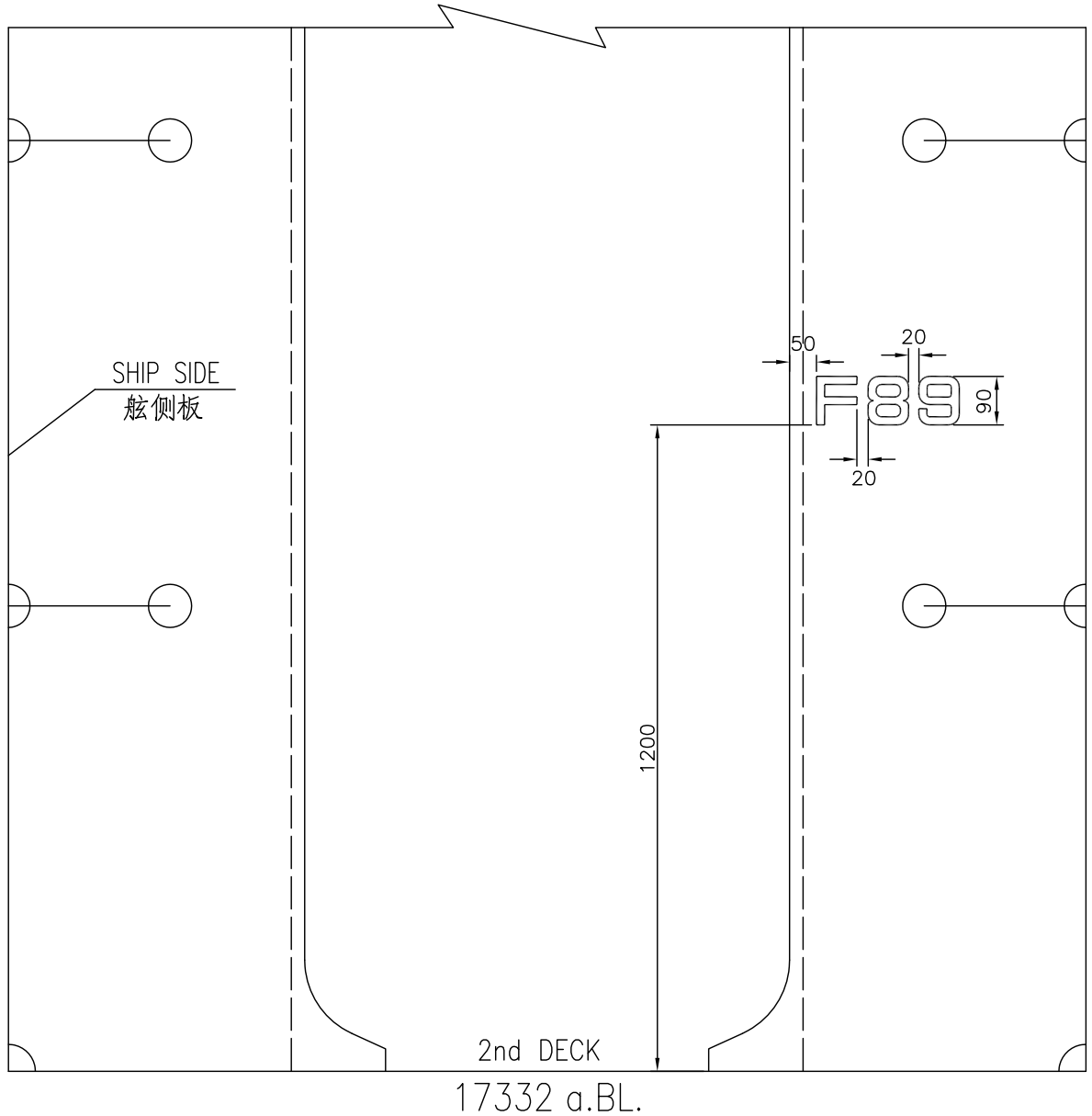
NOTES:

1. THE MARK SHOULD BE FIXED ON THE HULL'S BOTH SIDE AND SYMMETRICALLY ARRANGE. THE POSITION OF THIS MARK SEE PAGE 3 IN THE DRAWING.
2. THE LETTERS SHOULD BE MADE OF STEEL PLATE 6mm.
3. SIZE OF THE LETTERS SEE PAGE 12.

说明:

1. 标志需左右舷对称布置。布置位置见本册第3页。
2. 字母用6mm钢板切割而成。
3. 标志字母尺寸见本册第12页。

FRAME MARK  
肋位标志  
1:12.5



NOTES:

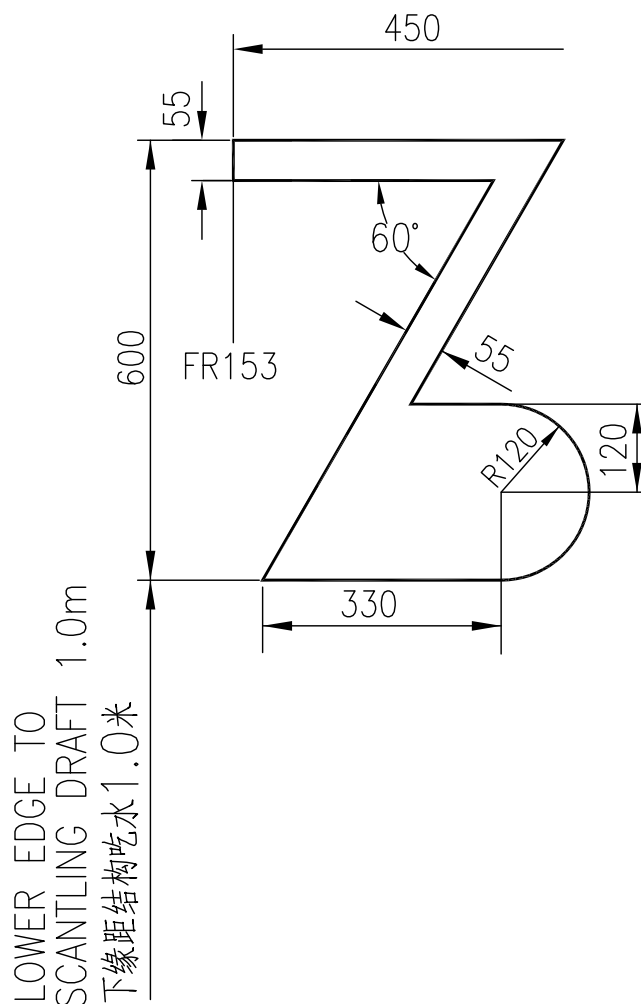
1. THE MARK SHOULD BE ARRANGED FOR FR19,25,31,43,54,59,65,71,77,83,89,95, 101,107,113,119,125,131,137. AND SYMMETRICALLY ARRANGED FOR P&S SIDES.
2. THE LETTERS SHOULD BE WELDED DIRECTLY ON THE WEB PLATE OF 2ND DECK.

说明:

1. 肋位标记的具体位置为FR19,25,31,43,54,59,65,71,77,83,89,95, 101,107,113,119,125,131,137. 肋位标记需左右舷对称布置。
2. 肋位标记的字母和数字直接用焊条焊在二甲板通道的横隔板上。

BOW BULB MARK  
球鼻艏标志

1:10



NOTES:

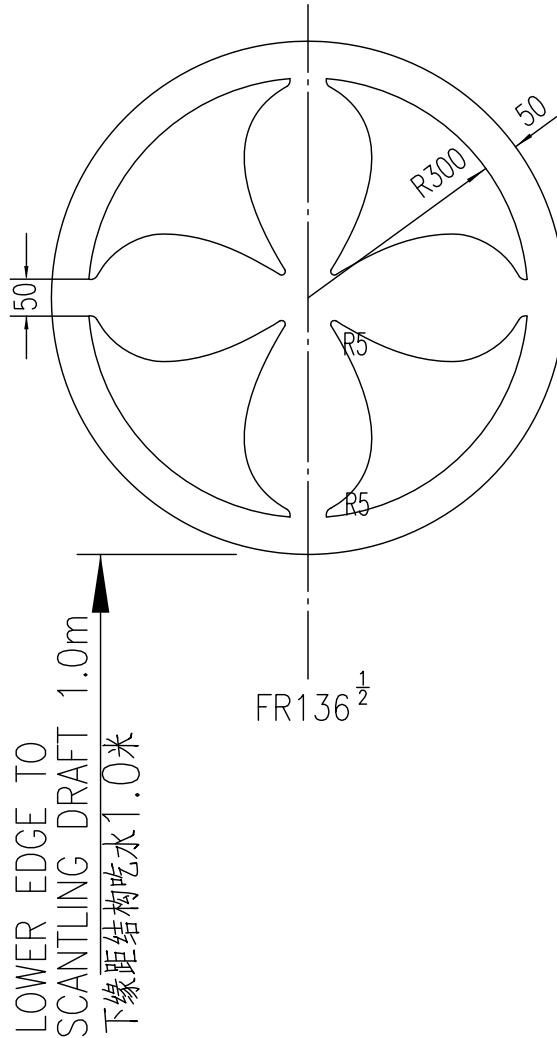
1. THE MARK SHOULD BE FIXED ON THE HULL'S BOTH SIDE AND SYMMETRICALLY ARRANGED.
2. THE POSITION OF THIS MARK SEE PAGE 3 IN THE DRAWING.
3. THE MARKS SHOULD BE MADE OF STEEL PLATE 6mm.
4. THE MARK IS PAINTED BLACK.

说明:

1. 标志需左右舷对称布置。
2. 标志布置位置见本册第3页。
3. 本标志用6mm钢板切割而成。
4. 标志漆为黑色。

THRUSTER MARK  
侧推标志

1:10



NOTES:

1. THE MARKS SHOULD BE MADE OF STEEL PLATE 6mm.
2. MARKS TO BE DONE BY SKILLFUL AND CAREFUL WELDING FOR THE QUALITY.
3. THE MARK SHOULD BE FIXED ON THE HULL'S BOTH SIDE AND SYMMETRICALLY ARRANGED.

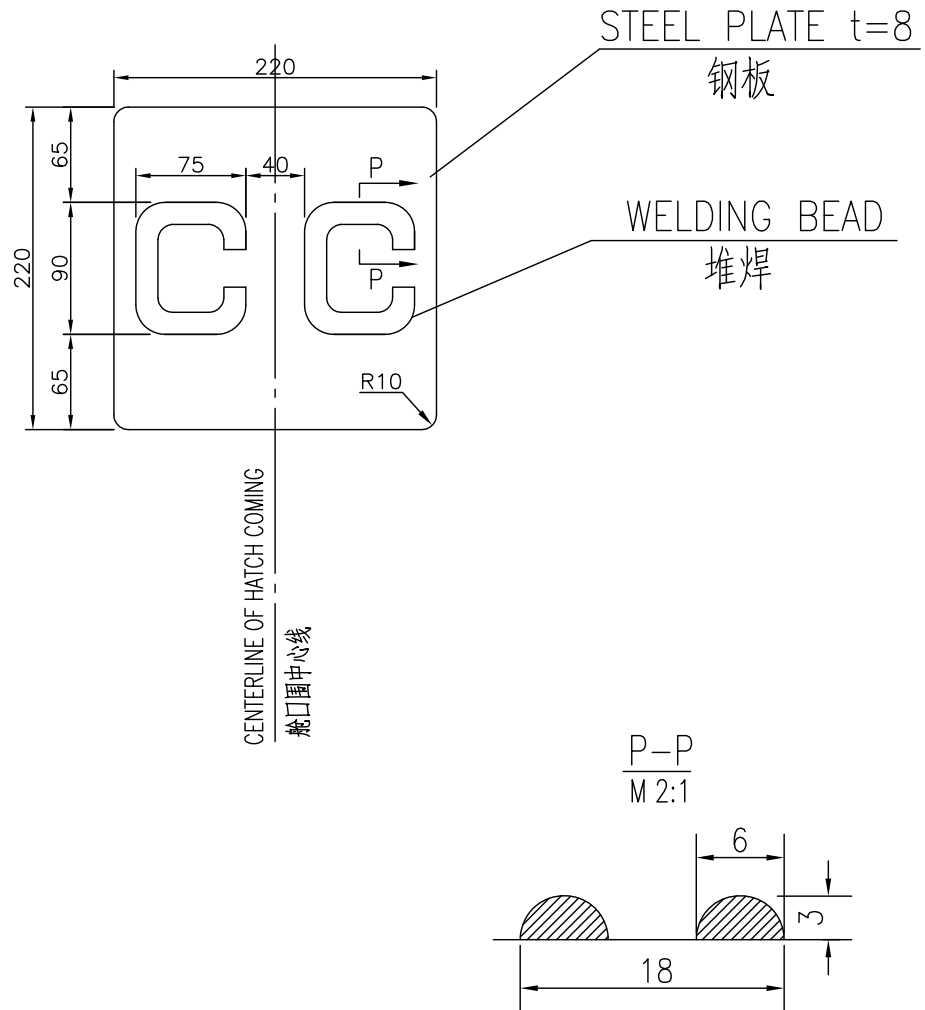
注:

1. 本图中标志用6mm钢板制。
2. 标志外形要求正确美观，电焊要求仔细，以确保质量。
3. 标志需左右舷对称布置。

CARGO COMPARTMENT MARK

货舱标志

1:5



NOTES:

1. THE MARK SHOULD BE ARRANGED ON PORT & STARBOARD SYMMETRICALLY.
2. THE MARK TO BE ATTACHED ON THE HATCH COAMING, BE MARKED BY WELD BEADS AND BE PAINTED RED.
3. THE POSITION OF THIS MARK SEE PAGE 3.

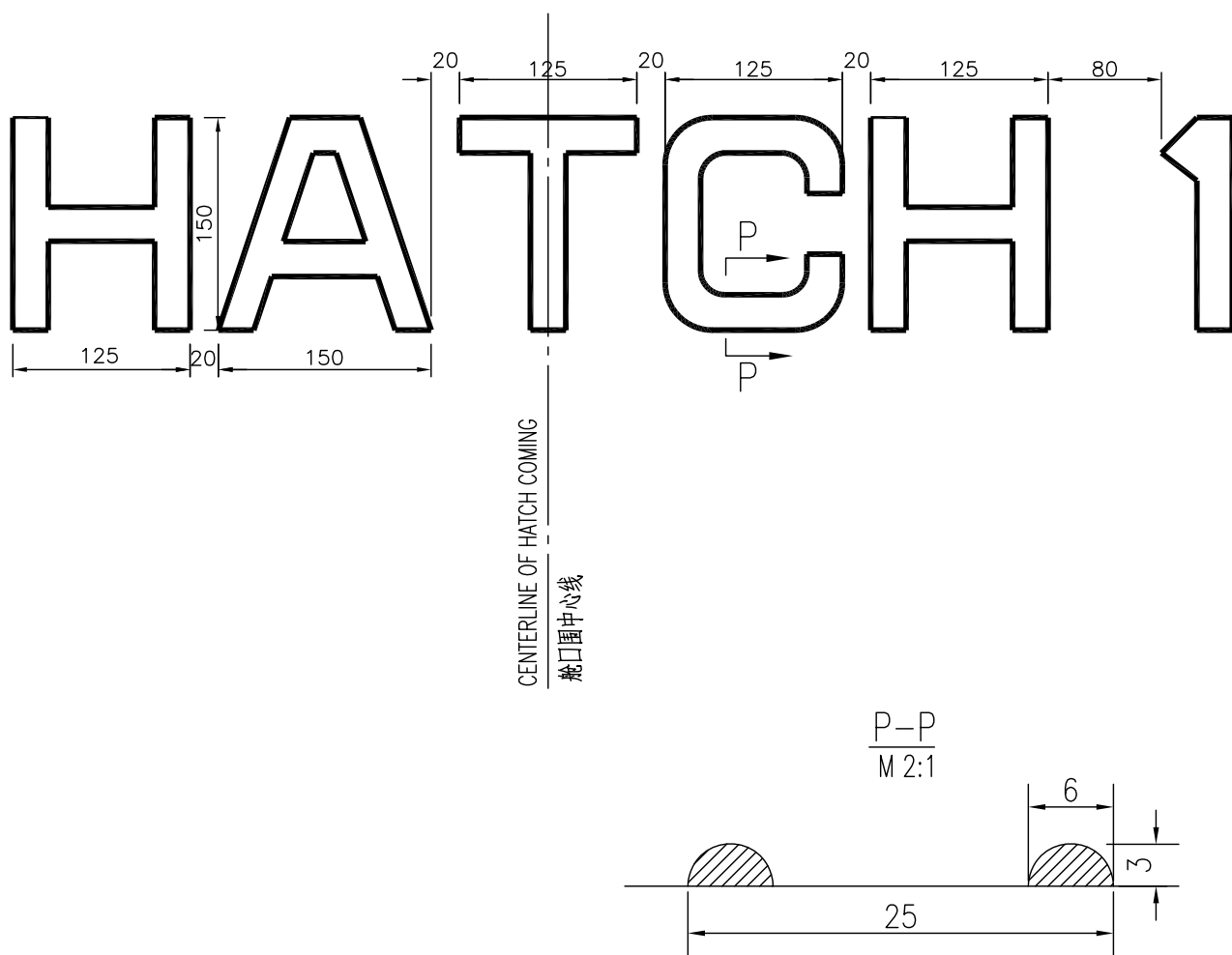
说明:

1. 标志需左右舷对称布置。
2. 本标志位于上甲板舱口围上, 每一笔划外侧进行堆焊, 并涂红色漆。
3. 标志布置位置见本册第 3 页。

HATCH MARK

货舱口标志

1:5

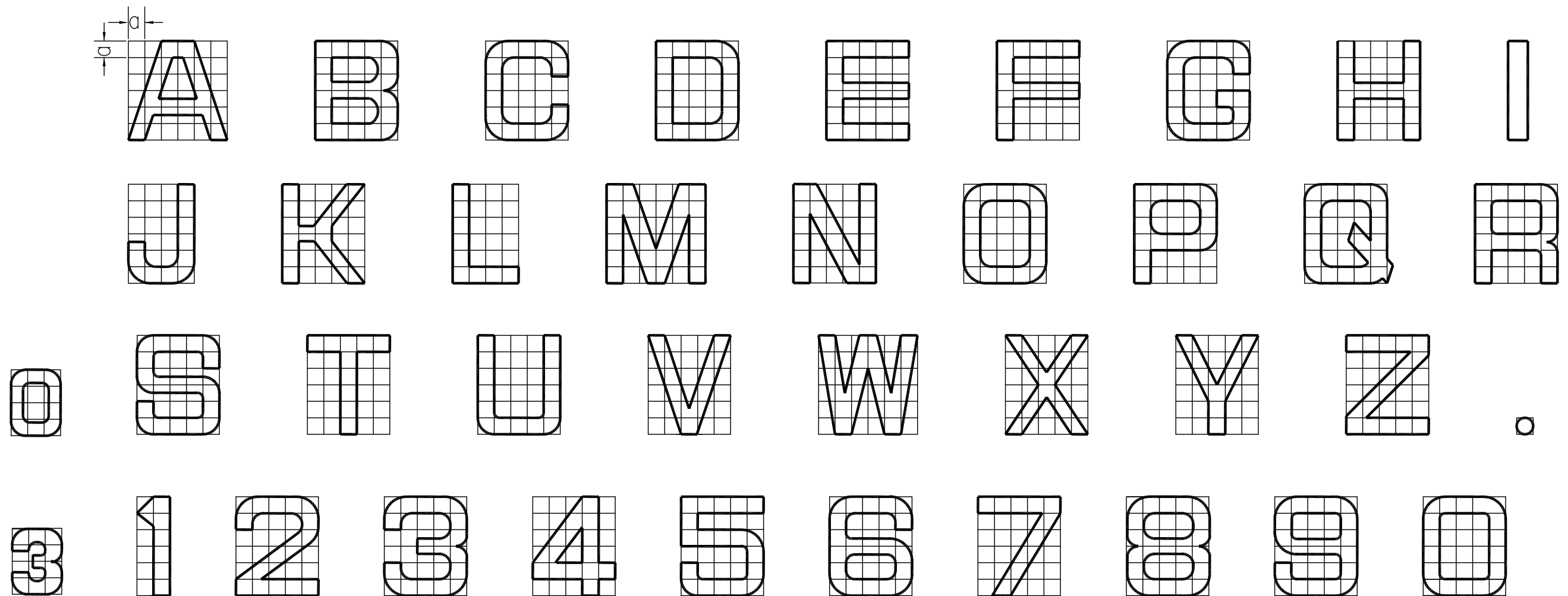


NOTES:

1. THE MARK SHOULD BE ARRANGED ON PORT & STARBOARD SYMMETRICALLY.
2. THE MARK TO BE ATTACHED ON THE HATCH COAMING INSIDE&OUTSIDE, BE MARKED BY WELD BEADS AND BE PAINTED RED.
3. THE POSITION OF THIS MARK SEE PAGE 3.
4. THE MARK TO BE ATTACHED ON CONTAINER STANCHION TOO,  
THOSE CONTAINER STANCHIONS ARE BAY02,06,10,14,18,22,26,30,34,38,42,46,50,54,58,62,66  
SEE PAGE 15.

说明:

1. 标志需左右舷对称布置。
2. 本标志位于上甲板舱口围板内外，每一笔划外侧进行堆焊，并涂红色漆。
3. 标志布置位置见本册第 3 页。
4. 本标志还位于集装箱立柱上，  
具体集装箱立柱为 Bay 02,06,10,14,18,22,26,30,34,38,42,46,50,54,58,62,66  
参见第 15 页。



NOTES:

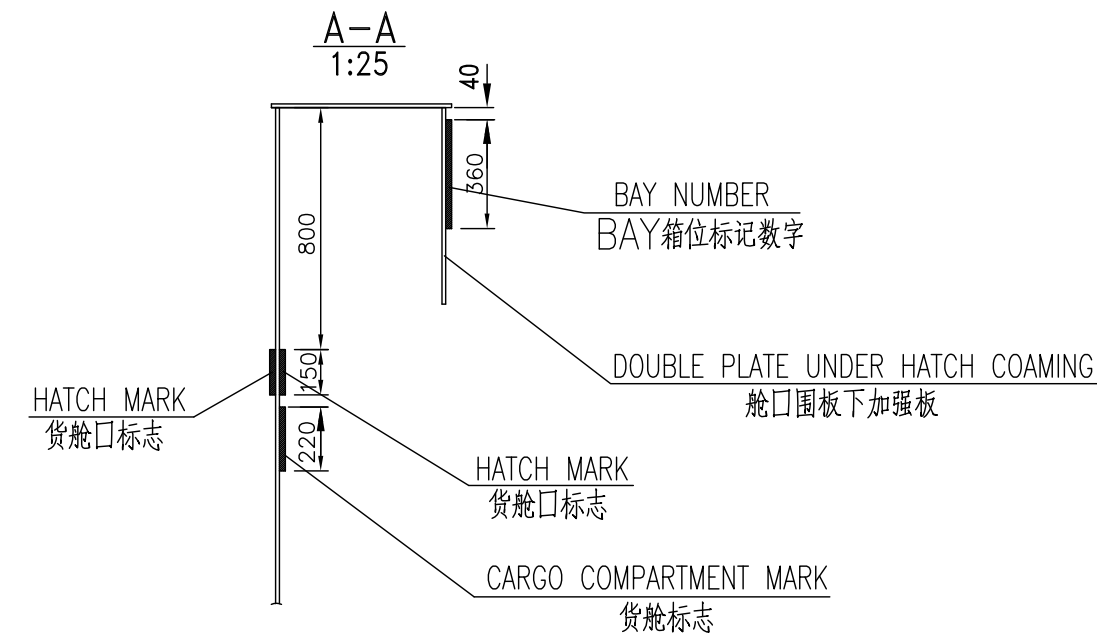
- 1.THE UNIT SIZE OF FRAME AND HOLD BOUNDARY MARK'S NUMBER AND LETTER ARE  $a \times a = 15 \times 15$
- 2.THE UNIT SIZE OF CONTAINER SPOT MARK'S NUMBER AND LETTER ARE  $a \times a = 60 \times 60$
- 3.THE UNIT SIZE OF CARGO COMPARTMENT MARK'S NUMBER AND LETTER ARE  $a \times a = 15 \times 15$
- 4.THE UNIT SIZE OF HATCH MARK AND LETTER ARE  $a \times a = 25 \times 25$
- 5.THE CONTAINER SPOT MARK'S NUMBER AND LETTER SHOULD BE WELDED DIRECTLY ON THE OUTSIDE PLATE OF THE CONTAINER STANCHION BY WELDING BEAD WITH WIDTH 8mm.

说明:

1. 肋位, 货舱分界标记所需字母和数字, 单元方格尺寸为:  $a \times a = 15 \times 15$ .
2. 箱位标记所需字母和数字, 单元方格尺寸为:  $a \times a = 60 \times 60$ .
3. 货舱标志所需字母和数字, 单元方格尺寸为:  $a \times a = 15 \times 15$ .
4. 货舱口标志所需字母和数字, 单元方格尺寸为:  $a \times a = 25 \times 25$ .
5. 箱位标记直接用焊条焊在甲板集装箱立柱外侧, 字母焊珠宽为 8mm.

AMOUNT OF THE BAY NUMBER (WHOLE SHIP ON HATCH COAMING OUTSIDE)  
BAY数字数量表(全船舱口围板下加强板外侧,货舱外)

NUMBER 数字	0	1	2	3	4	5	6	7	8	9
AMOUNT 数量	20	30	22	30	20	30	20	14	6	12



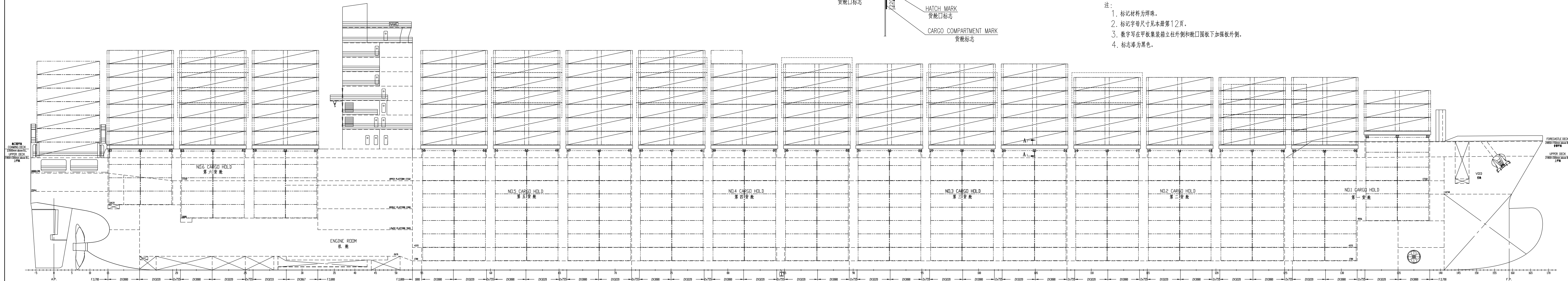
NOTE:

1. MATERIAL OF THE MARK IS WELD BEAD.
2. SIZE OF THE NUMBER SEE PAGE 12.
3. THE NUMBER WRITTEN ON THE OUTSIDE OF SUPPORTS AND DOUBLE PLATE UNDER HATCH COAMING.
4. THE MARK IS PAINTED BLACK.

注:

1. 标记材料为焊珠。
2. 标记字母尺寸见本册第12页。
3. 数字写在甲板集装箱立柱外侧和舱口围板下加强板外侧。
4. 标志漆为黑色。

1:300



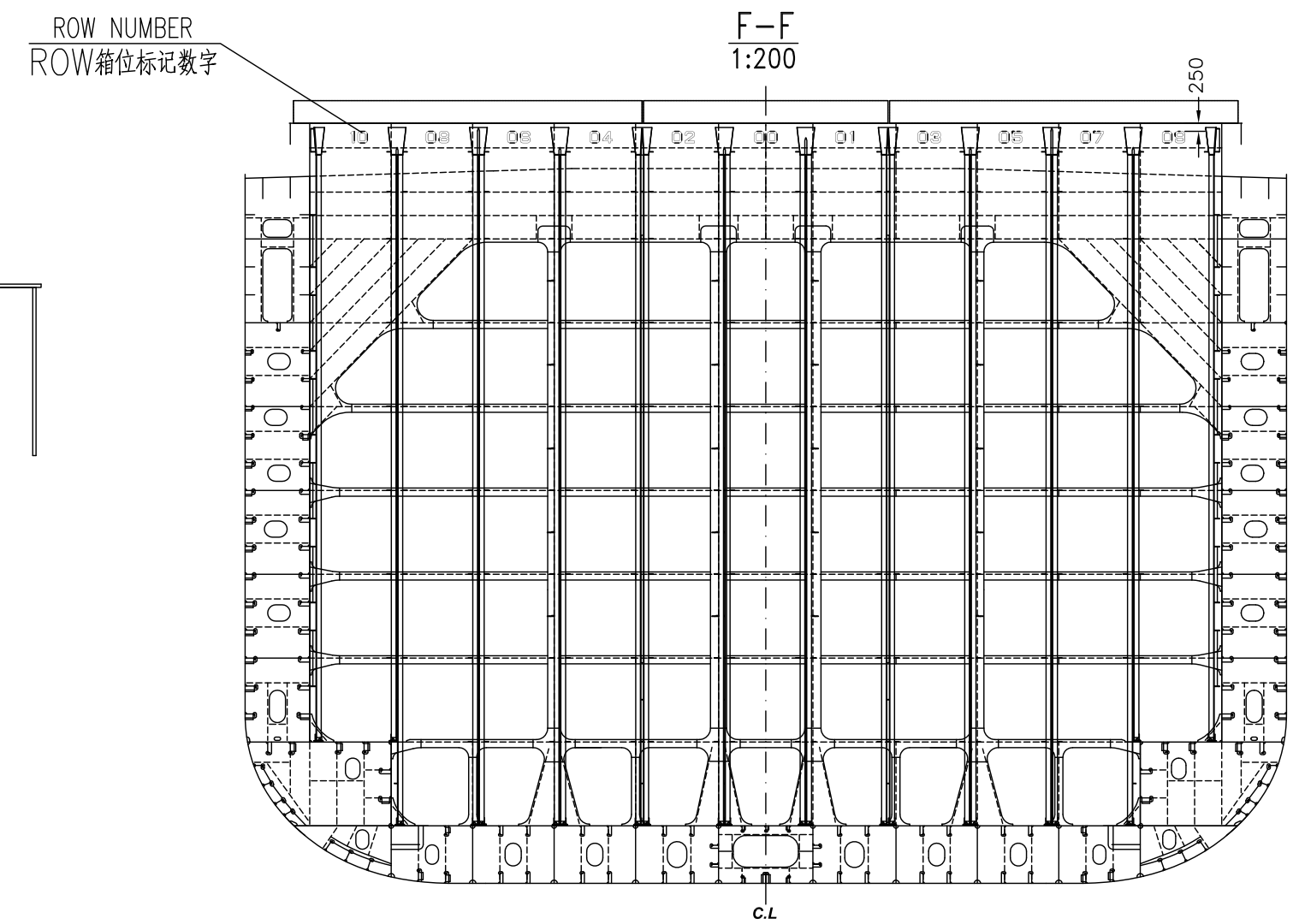
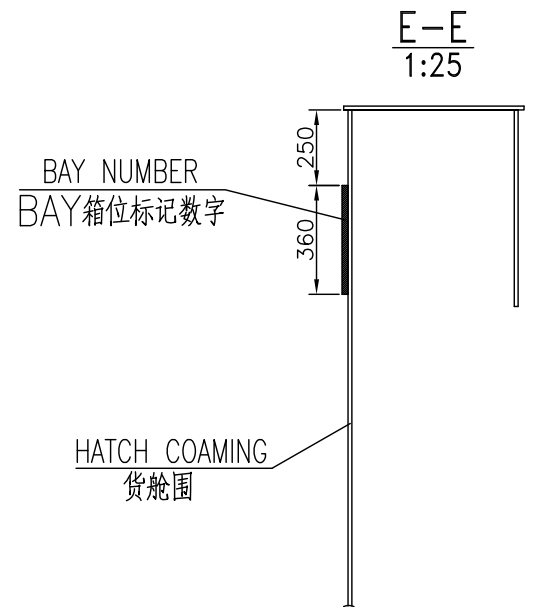
1:300

AMOUNT OF THE BAY NUMBER IN HOLD(WHOLE SHIP ON HATCH COAMING INSIDE)  
BAY数字数量表(全船舱口围板下加强板内侧, 货舱内)

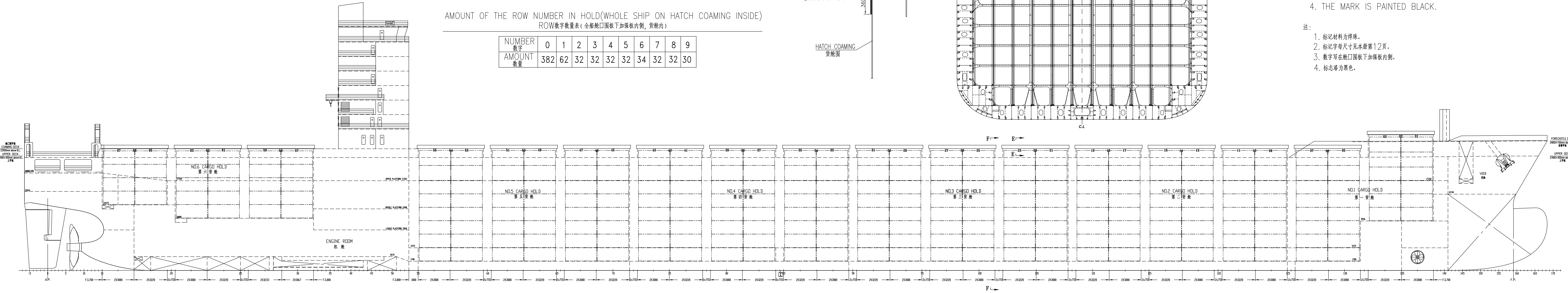
NUMBER 数字	0	1	2	3	4	5	6	7	8	9
AMOUNT 数量	20	30	22	30	20	30	20	14	6	12

AMOUNT OF THE ROW NUMBER IN HOLD(WHOLE SHIP ON HATCH COAMING INSIDE)  
ROW数字数量表(全船舱口围板下加强板内侧, 货舱内)

NUMBER 数字	0	1	2	3	4	5	6	7	8	9
AMOUNT 数量	382	62	32	32	32	32	34	32	32	30



- NOTE:
- MATERIAL OF THE MARK IS WELD BEAD.
  - SIZE OF THE NUMBER SEE PAGE 12.
  - THE NUMBER WRITTEN ON THE HATCH COAMING INSIDE.
  - THE MARK IS PAINTED BLACK.
- 注:
- 标记材料为焊珠。
  - 标记字母尺寸见本册第12页。
  - 数字写在舱口围板下加强板内侧。
  - 标志漆为黑色。



AMOUNT OF THE BAY NUMBER (WHOLE SHIP ON CONTAINER STANCHION)  
BAY数字数量表 (全船甲板集装箱立柱外侧)

1:300

NUMBER 数字	0	1	2	3	4	5	6	7	8	9
AMOUNT 数量	22	30	22	30	20	30	20	16	6	12

