


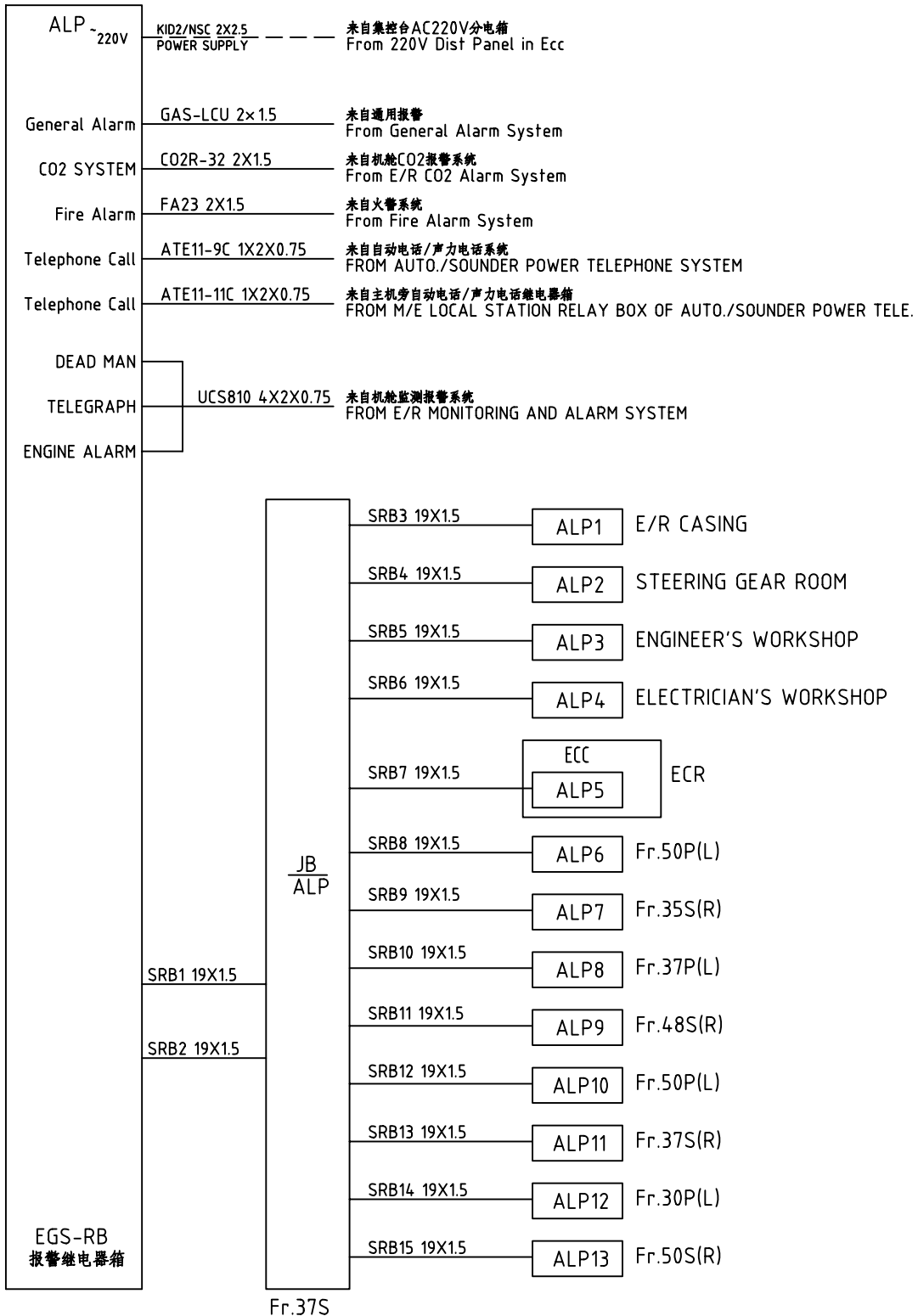
SHANGHAI JIANGNAN CHANGXING
HEAVY INDUSTRY CO.,LTD.

Hull No.: H2431/2432/2433

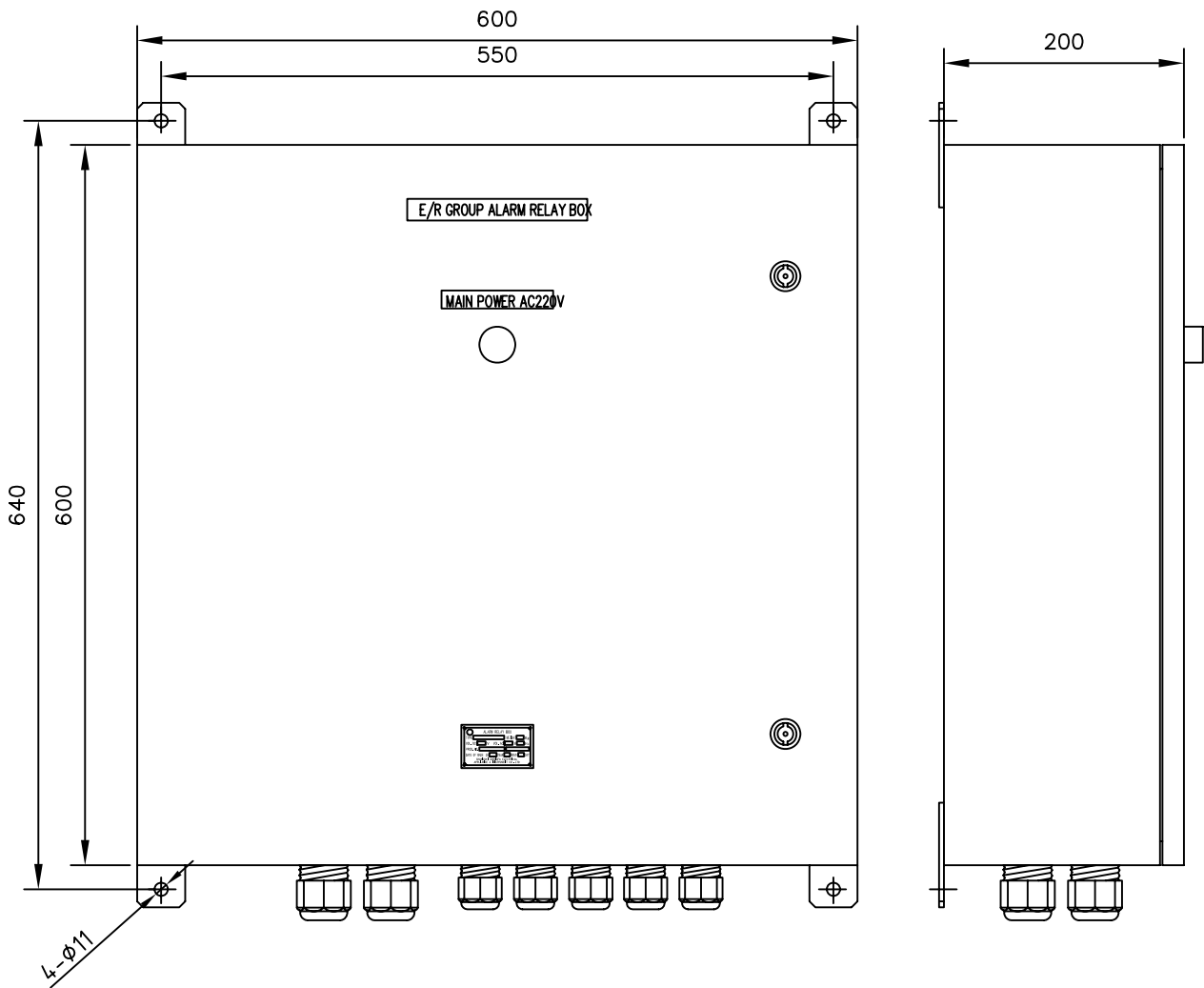
5100TEU CONTAINER VESSEL
ENGINE ROOM ALARM SYSTEM

DESIGNED BY		DRAWING NO.	TC06P174-11
COMPARED BY		REVISION	
CHECKED BY		CLASS	GL
APPROVED BY		DATE	2007-05-15
 TERASAKI <i>Ensuring Service, Maintaining Quality</i>		TERASAKI (CHINA) ELECTRIC CO., LTD	

NO.	DWG. NO.	DWG.SPECIFICATION	PAGE NO.	REMARKS
1	EC-03	供货清单 SUPPLY LIST	3	
2	EC-04	报警系统图 ALARM SYS.INDICATION TABLE	4	
3	EC-05	报警系统方框图 ALARM SYSTEM BLOCK DIAGRAM	5	
4	EC-06	继电器箱外形图 OUTLINE-VIEW DIAGRAM FOR RELAY BOX	6	
5	EC-07	继电器箱原理图 PRINCIPLE DIAGRAM FOR RELAY BOX	7	
6	EC-08	继电器箱原理图 PRINCIPLE DIAGRAM FOR RELAY BOX	8	
7	EC-09	报警系统接线图 TERMINAL CONNECTION DIAGRAM ALARM SYSTEM	9	
8	EC-10	报警系统接线图 TERMINAL CONNECTION DIAGRAM ALARM SYSTEM	10	
9	EC-11	报警系统接线图 TERMINAL CONNECTION DIAGRAM ALARM SYSTEM	11	
10	EC-12	报警系统接线图 TERMINAL CONNECTION DIAGRAM ALARM SYSTEM	12	
11	EC-13	报警大灯柱接线图 TERMINAL CONNECTION FOR LIGHT COLUMN(LAGRE)	13	
12	EC-14	报警大灯柱外形图 OUTLINE-VIEW DIAGRAM FOR LIGHT COLUMN(LAGRE)	14	
13	EC-15	报警小灯柱接线图 TERMINAL CONNECTION FOR	15	
14	EC-16	报警小灯柱外形图 OUTLINE-VIEW DIAGRAM FOR ALARM INDI. PANEL	16	
15	EC-17	报警电笛技术数据 TECHNICAL DATA FOR SIREN S1/S2	17	
16	EC-18	机舱报警指示板接线图 PRINCIPLE DIAGRAM FOR OPTICAL ALARM PANEL(INBUILT)	18	
17	EC-19	机舱报警指示板外形图 OUTLINE-VIEW FOR OPTICAL ALARM PANEL(INBUILT)	19	
18	EC-20	供货清单 SUPPLY LIST	20	
19	EC-21	供货清单 SUPPLY LIST	21	
20	EC-22	供货清单 SUPPLY LIST	22	



指示内容 INDICATION		信号种类 SIGNAL KIND (NC)	通用报警	CO2报警	火警	机器故障	电话呼叫	车钟报警	死亡报警
		GENERAL ALARM	CO2 ALARM	FIRE ALARM	ENGINE ALARM	TELEPHONE CALL	TELEGRAPH CALL	DEAD MAN ALARM	
符号 SIGNED	通用报警 GENERAL ALARM		×						
	CO2报警 CO2 ALARM			×					
	火警 FIRE ALARM				×				
	机器故障 ENGINE ALARM					×			
	电话呼叫 TELEPHONE CALL						×		
	机舱车钟 TELEGRAPH CALL							×	
	死亡报警 DEAD MAN ALARM								×
闪光灯 STROBE LIGHT	绿 GREEN		×						
	红 RED			×	×				
	黄 YELLOW					×	×	×	×
报警器 SIREN (S1)			×	×	×	×	×	×	×
报警器 SIREN (S2)			×	×	×	×	×	×	×
蜂鸣器 BUZZER			×	×	×	×	×	×	×

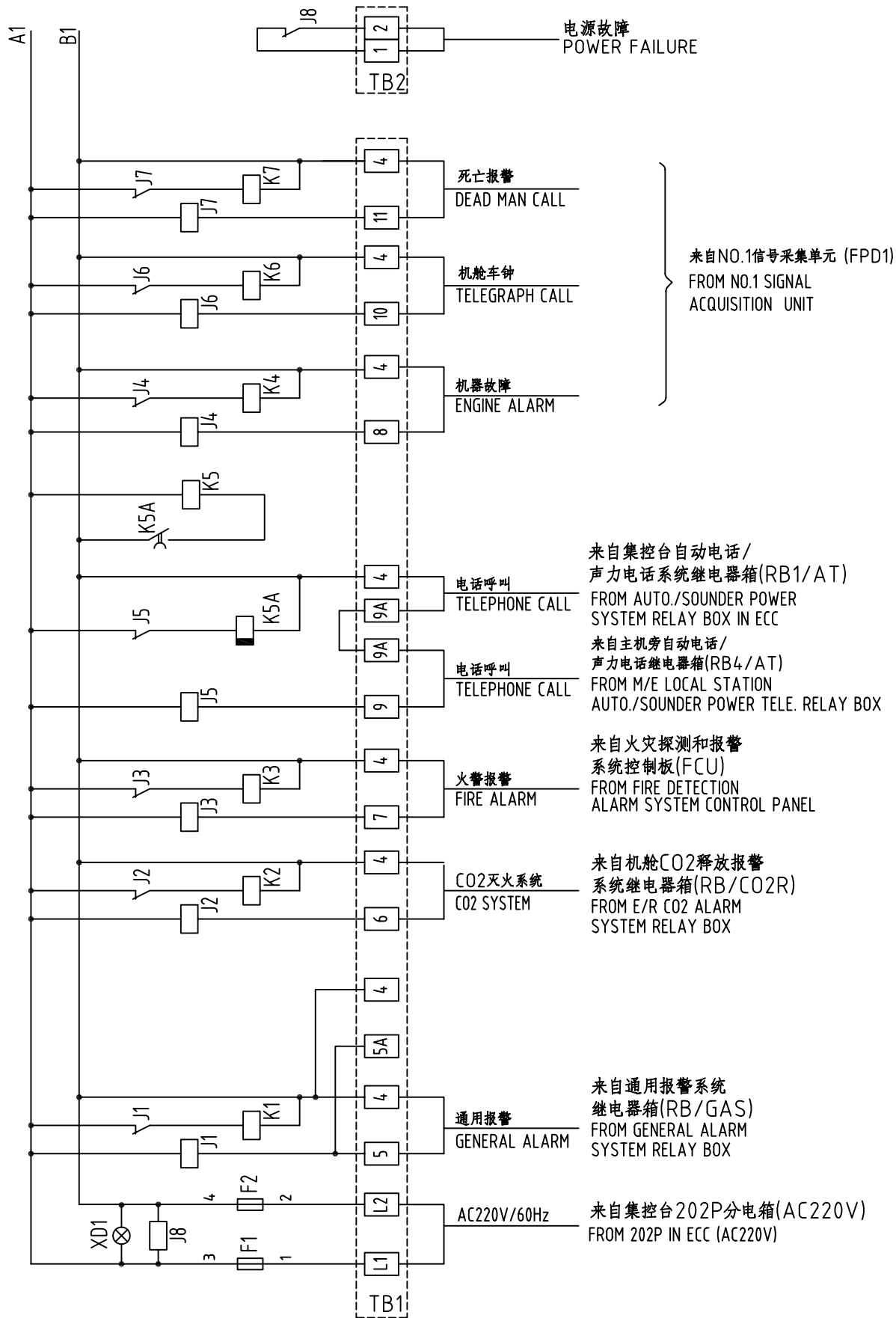


说明:

1. 重量约: 32Kg
2. 箱体颜色: RAL7032
3. 材料: 钢板 厚2mm
4. 防护等级: IP44
5. 电缆填料函: PG29X2,PG21X1,PG16X4,PG11X2

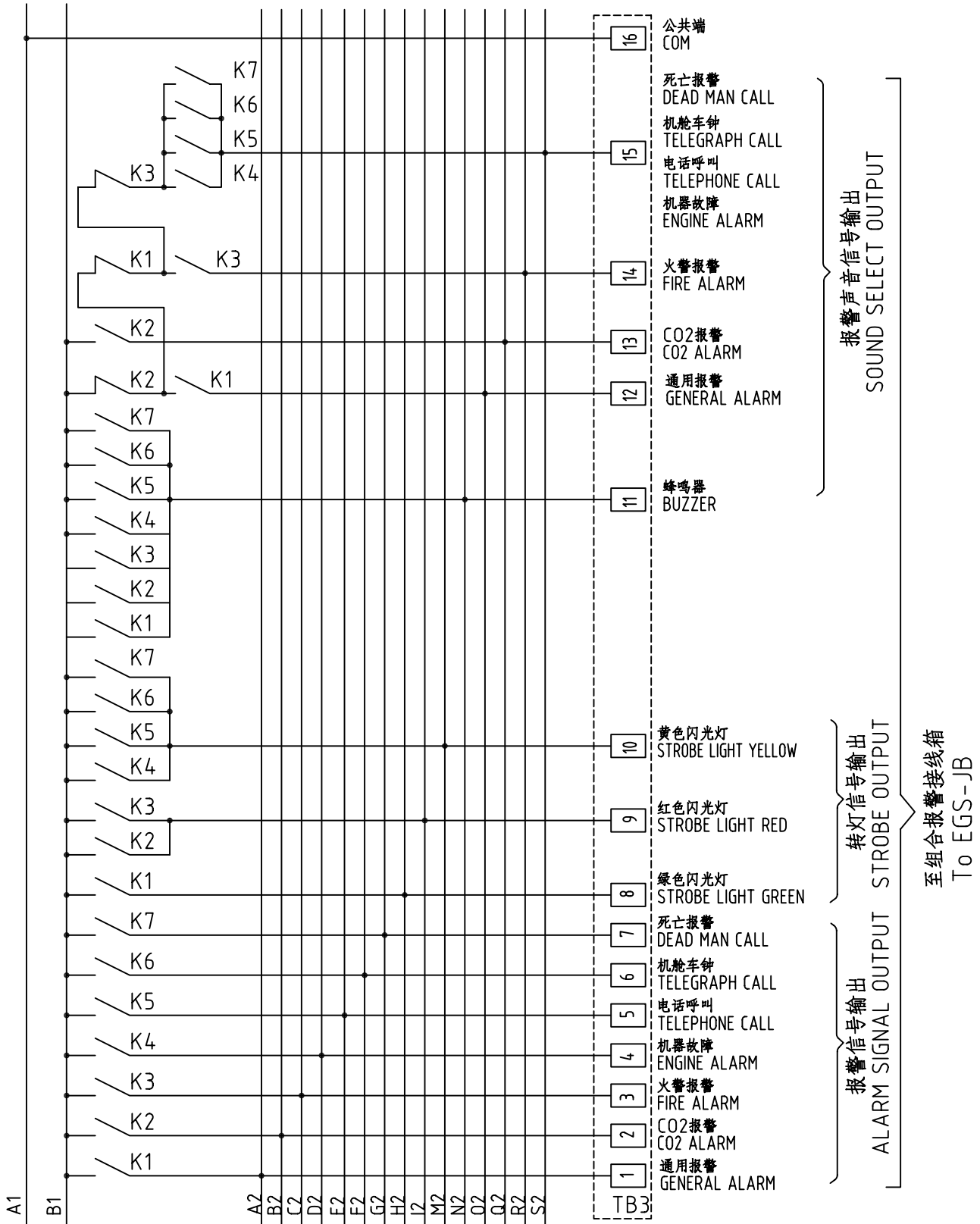
NOTE:

1. APPROX. WEIGHT: 32Kg
2. PAINT COLOUR:RAL7032
3. PLATE MATERIAL: STEEL t=2mm
4. ENCLOSURE: IP44
5. CABLE GLAND: PG29X2,PG21X1,PG16X4,PG11X2

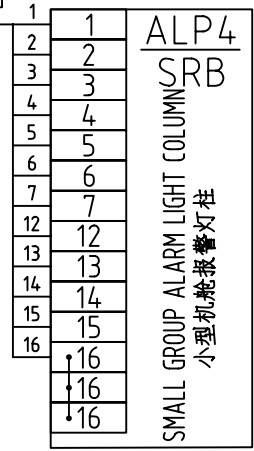
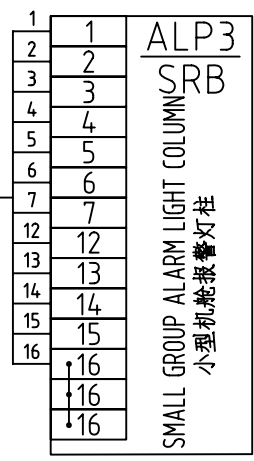
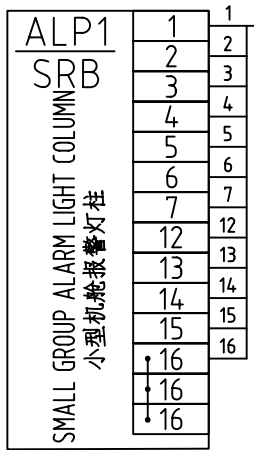
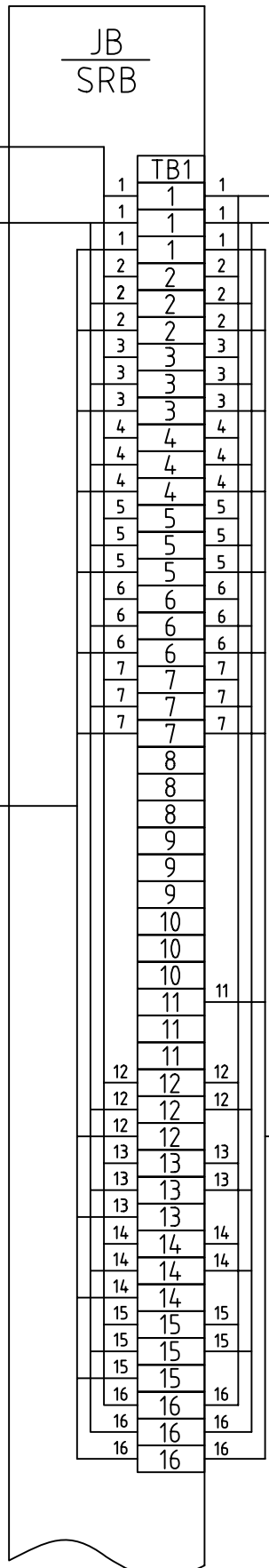


报警信号输入(正常NC)
ALARM SIGNAL INPUT

ITEM 序号	CODE 代号	DESCRIPTION 名称	TYPE 型号	QTY 数量	REMARKS 备注
1	J1-J8	RELAY 中间继电器	HH52P	8	AC220V 60Hz
2	K1-K7	AC CONTACTOR 交流接触器	LC1-D0910M7C	7	AC220V 60HZ
3	XD1	INDICATOR 指示灯	YW1P-1BEM45W	1	AC220V/WHITE
4	K5A	TIME RELAY 时间继电器	OMRON H3CR	1	AC220V
5	FU1,FU2	FUSE 保险丝	RL98-16/10A	2	



FROM RELAY BOX (PAGE 2)
来自继电器箱 (第2页)



SRB1 19X1.5

SRB3 19X1.5

SRB4 19X1.5

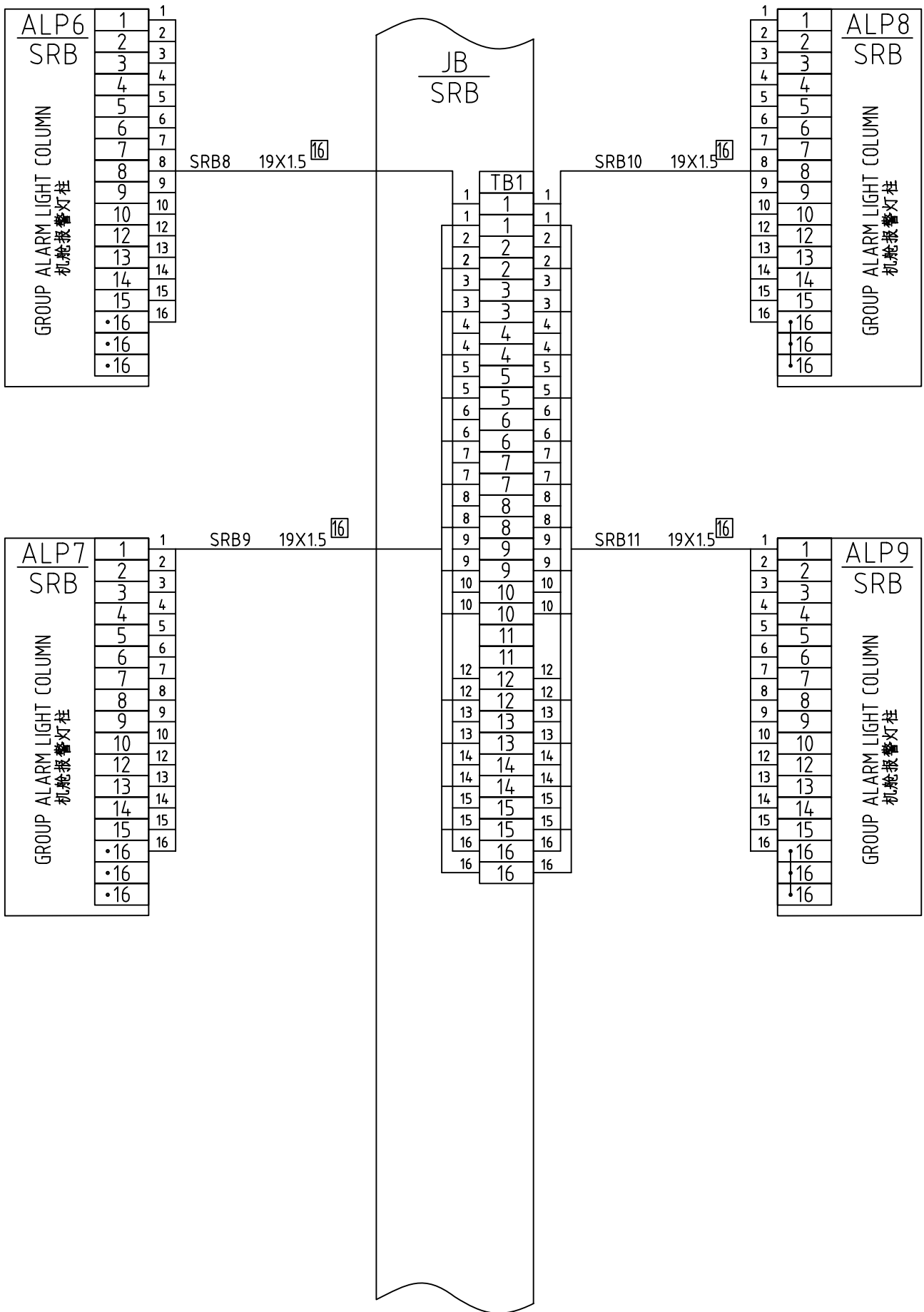
SRB5 19X1.5

SRB6 19X1.5

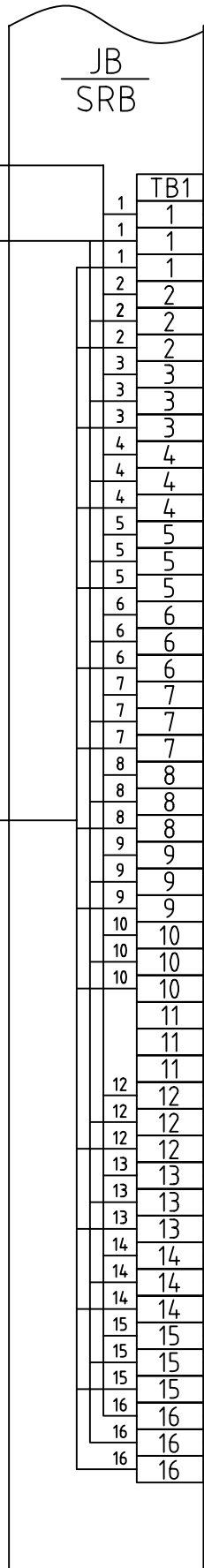
SRB7 19X1.5

TO OPTICAL ALARM
PANEL IN ECC
至集控台机舱报警灯板

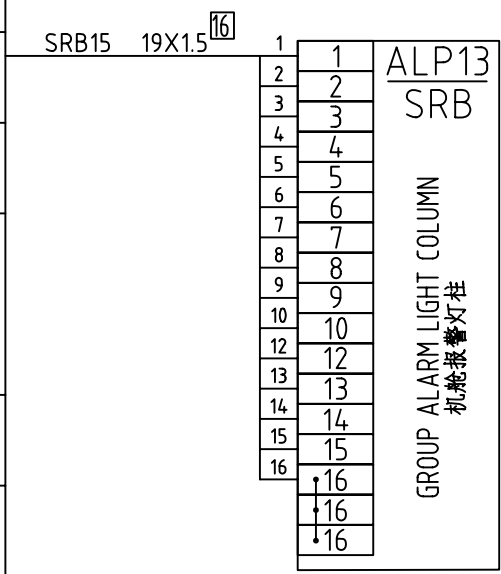
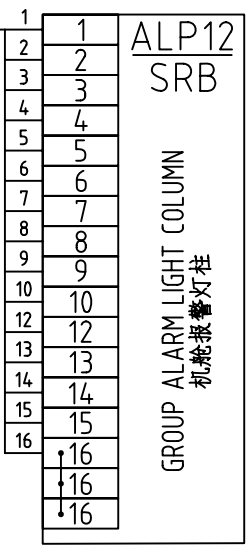
E/R LIGHT COLUMN JUNCTION BOX
机舱报警灯柱接线箱



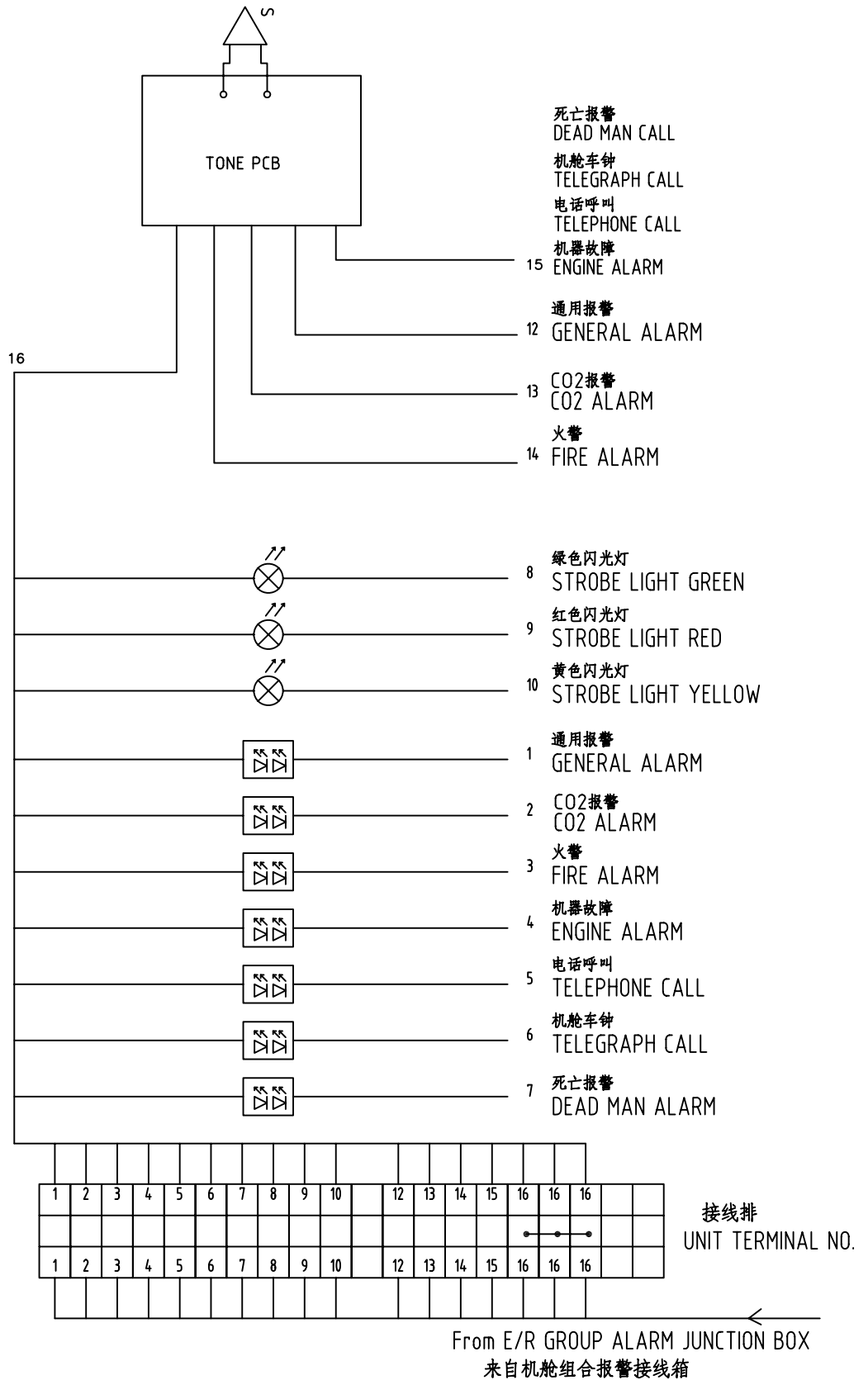
E/R LIGHT COLUMN JUNCTION BOX
机舱报警灯柱接线箱

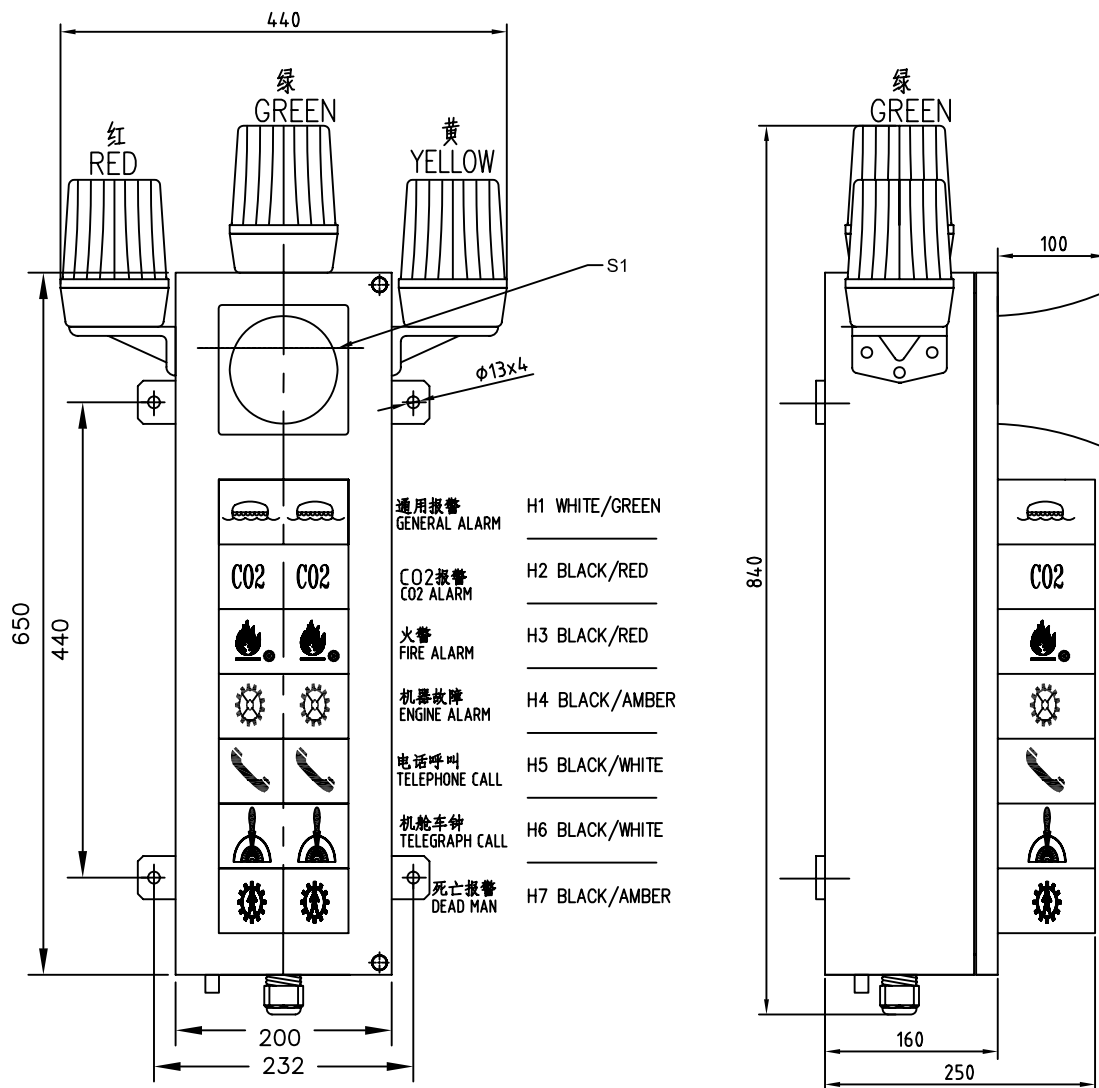


FROM RELAY BOX (PAGE 2)
来自继电器箱 (第2页)



E/R LIGHT COLUMN JUNCTION BOX
机舱报警灯柱接线箱





说明:

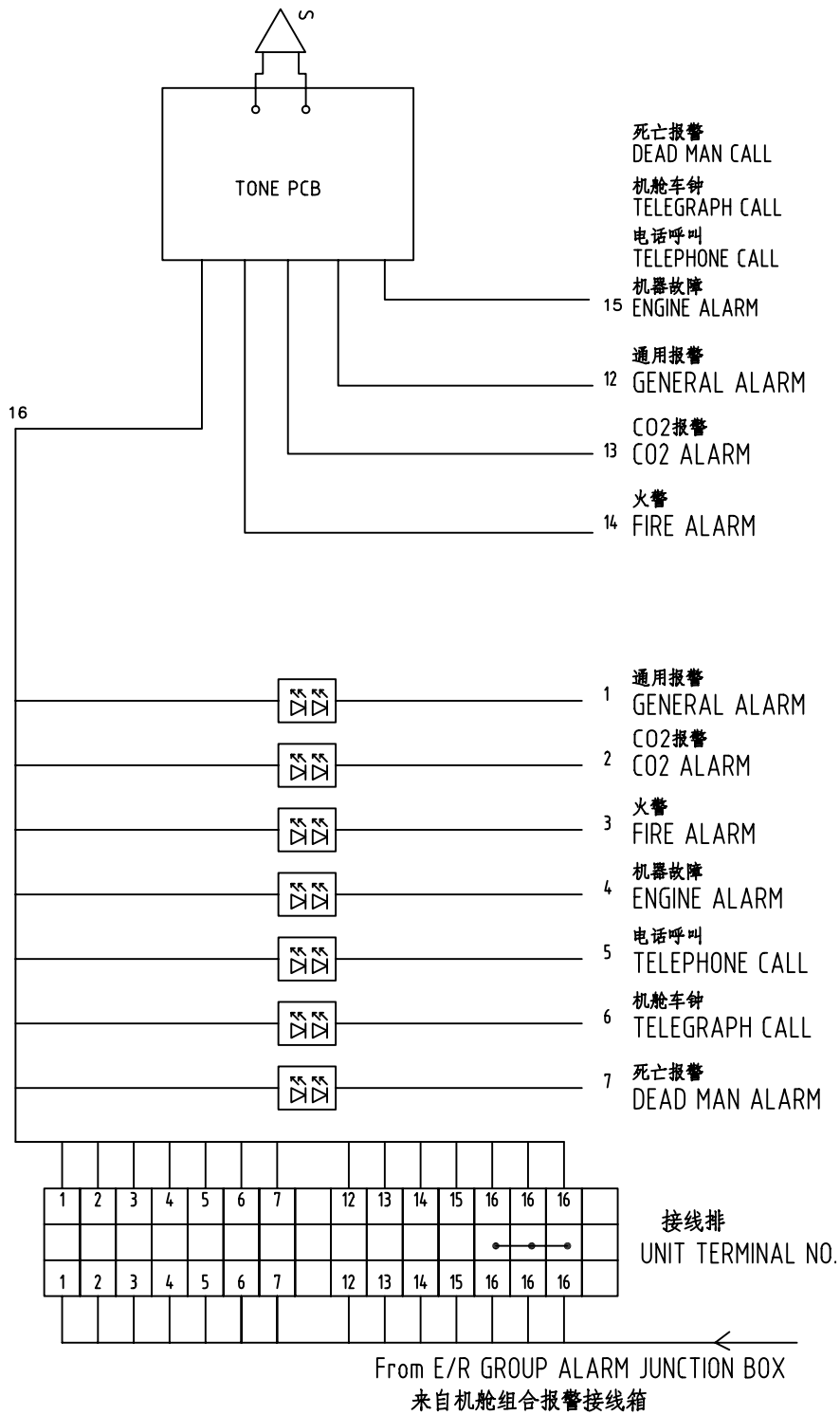
1. 重量约: 25Kg
2. 箱体颜色: RAL7032
3. 材料: 钢板 厚1.5mm
4. 防护等级: IP44
5. 电缆填料函: PG29X1

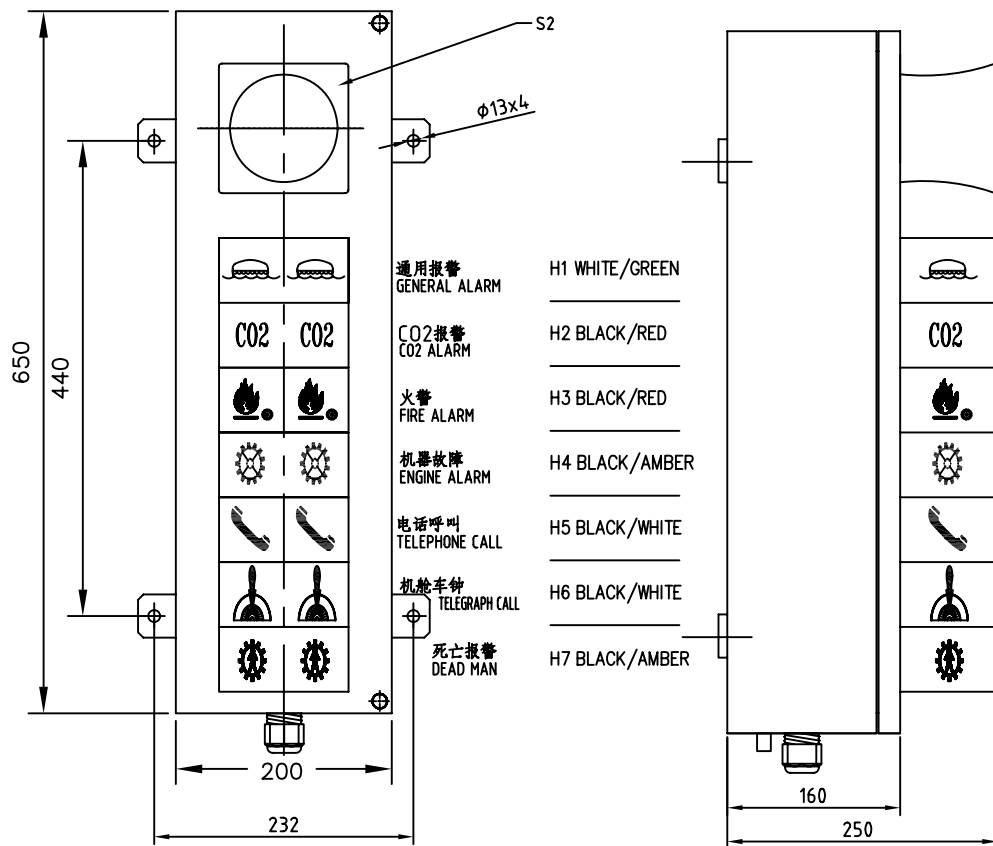
NOTE:

1. APPROX. WEIGHT: 25Kg
2. PAINT COLOUR: RAL7032
3. PLATE MATERIAL: STEEL t=1.5mm
4. ENCLOSURE: IP44
5. CABLE GLAND: PG29X1

STROBE LIGHT TECHNICAL:

OPERATING VOLTAGE:	AC220V
BULB:	LED
POWER CONSUMPTION:	ABT. 0.15A
GLASS COVER COLOUR:	RED/YELLOW/GREEN
MANUFACTURER:	SHENGFA



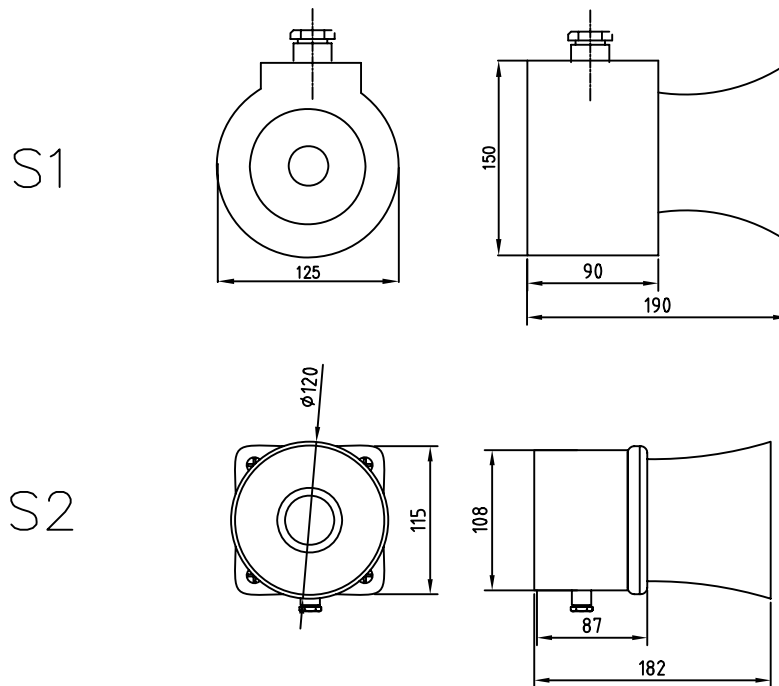


说明:

1. 重量约: 25Kg
2. 箱体颜色: RAL7032
3. 材料: 钢板 厚1.5mm
4. 防护等级: IP44
5. 电缆填料函: PG29X1

NOTE:

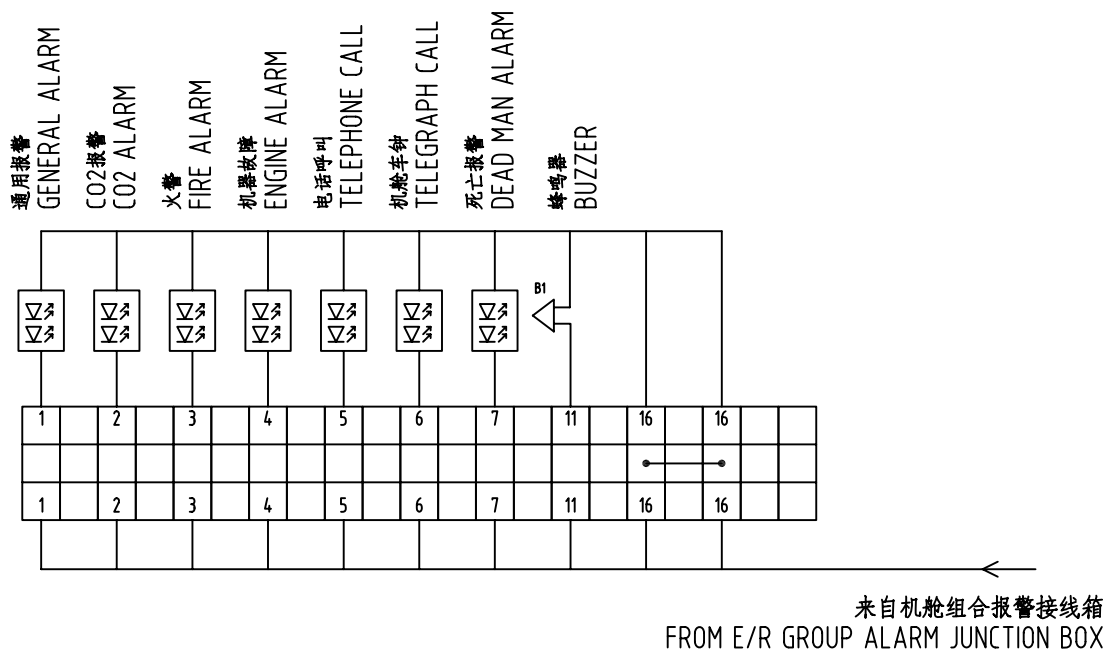
1. APPROX. WEIGHT: 25Kg
2. PAINT COLOUR: RAL7032
3. PLATE MATERIAL: STEEL $t=1.5\text{mm}$
4. ENCLOSURE: IP44
5. CABLE GLAND: PG29X1

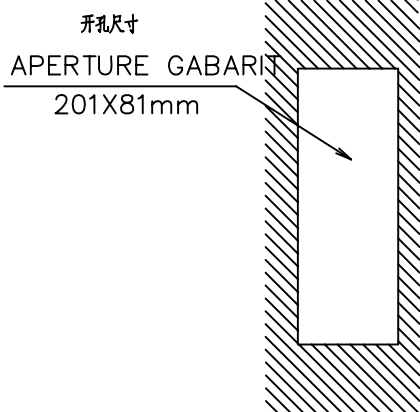
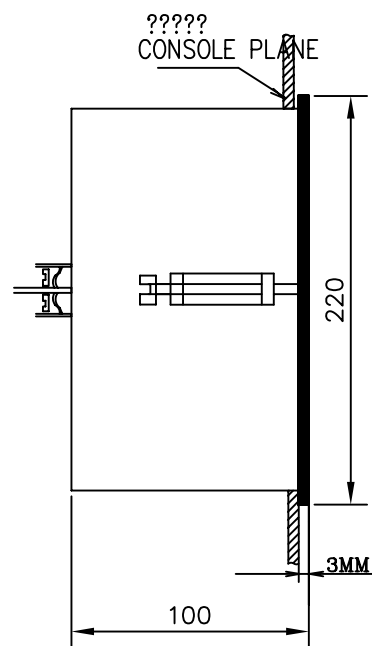
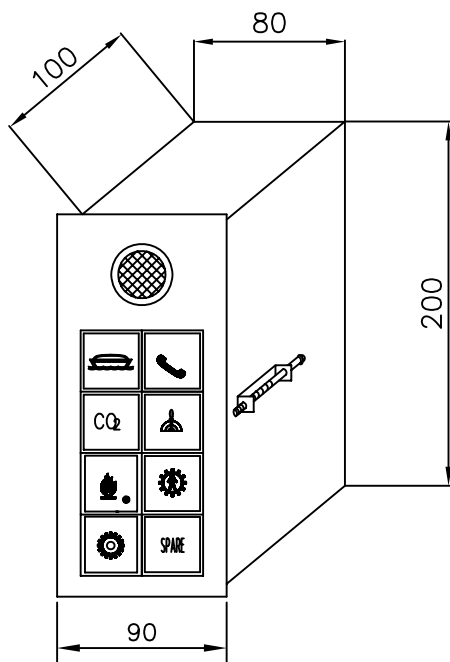


Technical Parameter

1. SOUND LEVEL(AT DISTANCE OF 1.0M): S1>=115dB
1. SOUND LEVEL(AT DISTANCE OF 1.0M): S2>=110dB
2. OPERATING VOLTAGE: AC220V
3. CURRENT CONSUMPTION: 0.06A
4. COLOUR: 5R 4/3
5. TONE KIND:

	GENERAL ALARM
	CO2 ALARM
	FIRE ALARM
	ENGINE ALARM TELEPHONE CALL TELEGRAPH CALL DEAD MAN ALARM





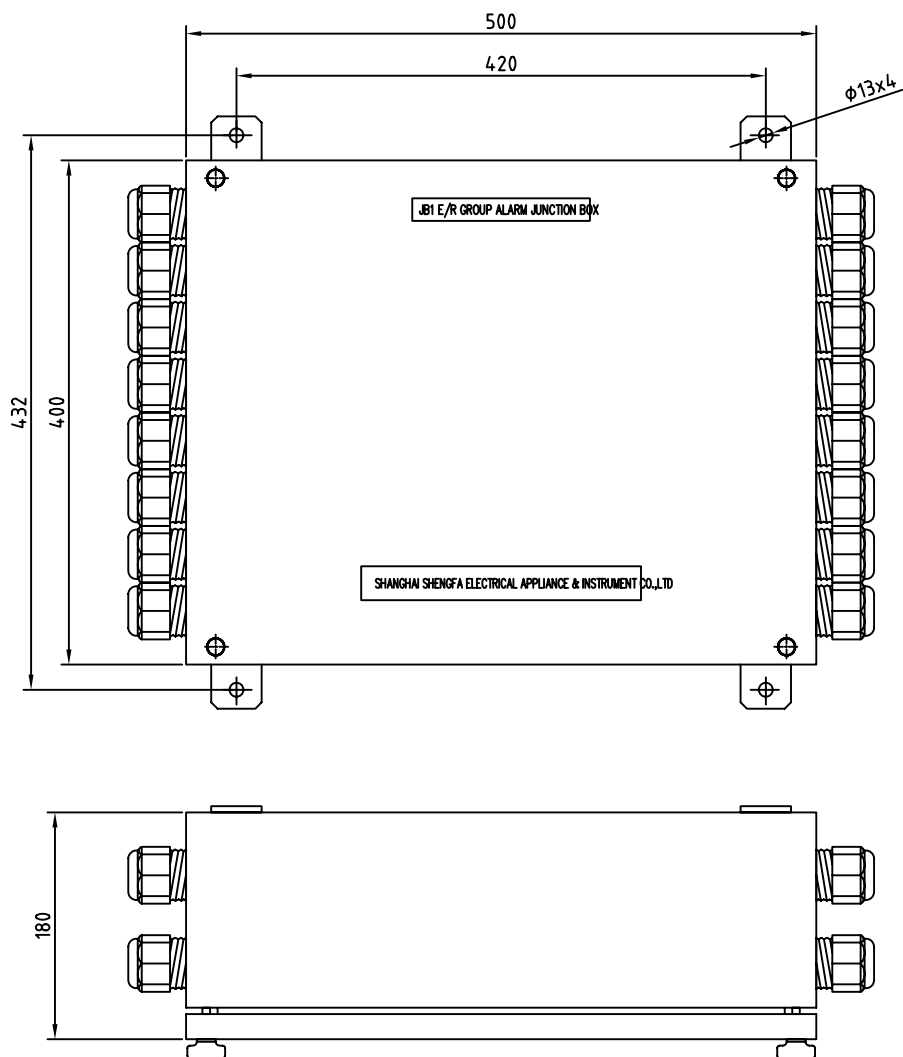
说明:

1. 重量约: 2Kg
2. 箱体颜色: 黑色
3. 材料: 钢板 厚1.5mm
4. 防护等级: IP22

NOTE:

1. APPROX. WEIGHT: 2Kg
2. PAINT COLOUR: BLACK
3. PLATE MATERIAL: STEEL t=1.5mm
4. ENCLOSURE: IP22

ITEM	SPECIFICATION	QTY	MANUFACTURE	REMARK
1	PANEL BODY	1	SHENGFA	STEEL t=1.5mm
2	ALARM LIGHT	8	APT	AD16-22F/ 23
3	BUZZER	1	APT	DECIBEL 10cm/80dB
4	TERMINAL	1		

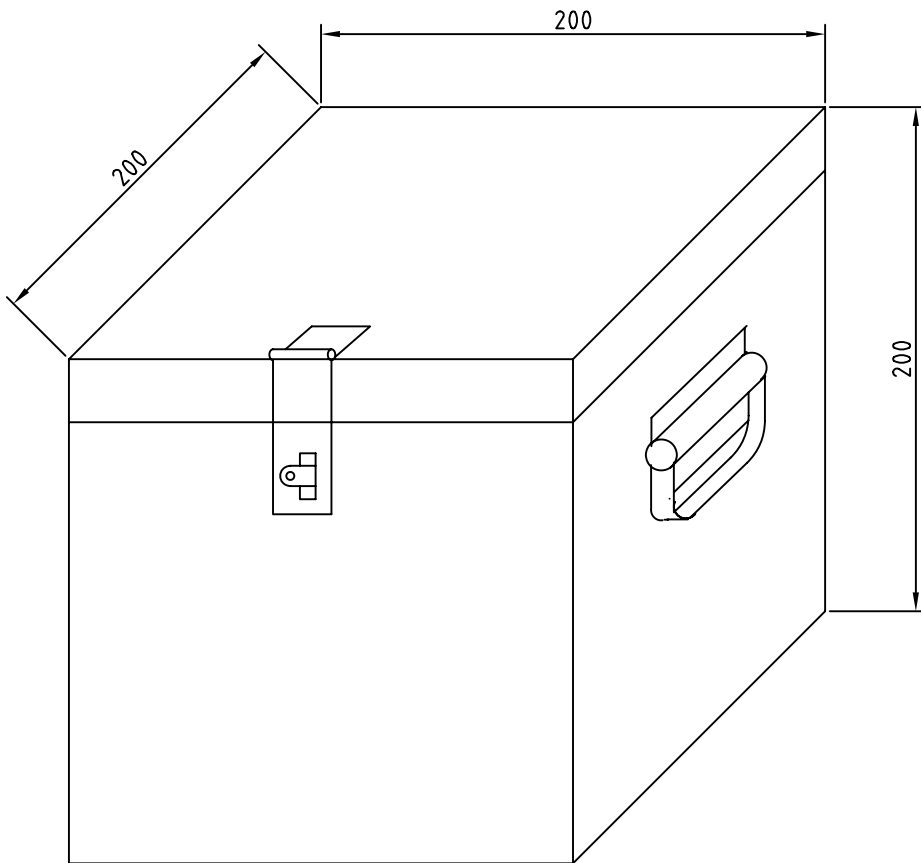


说明:

1. 重量约: 20Kg
2. 箱体颜色: RAL7032
3. 材料: 钢板 厚1.5mm
4. 防护等级: IP44
5. 填料函: PG29x15

NOTE:

1. APPROX. WEIGHT: 20Kg
2. PAINT COLOUR: RAL7032
3. PLATE MATERIAL: STEEL t=1.5mm
4. ENCLOSURE: IP44
5. STUFFING BOX: PG29x15



NAME PLATE
铭 牌

SPARE PARTS BOX

